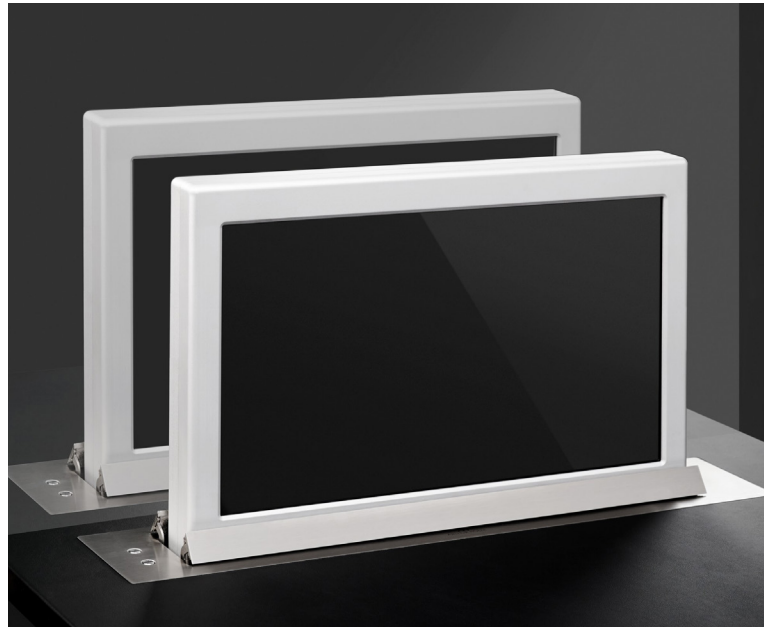
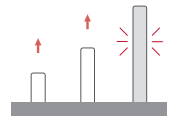


## Dynamic 1Twin

Aluminium retractable double sided motorised monitor



### FEATURES

- 18.5" motorised monitor
- Double sided display
- Passive cover plate
- Interactive Setup Display
- Maintenance free
- HDCP compliant
- Energy saving design
- Serial control & Remote diagnose

### GENERAL

Dynamic1Twin monitors have been designed for installation in tables, desks or counters.

Dynamic1Twin is a vertically retractable system with double screen. Two monitors are placed back to back in a compact anodised aluminium frame; allowing the display of different content for a 2 way communication in reception desks, information counters or in meeting and conference room tables with limited space. The screens are only visible when required, disappearing inside the table desk by the simple push of a button or by remote control.

Dynamic1Twin has an extremely fast lift system with a very low noise level. Very easy to install, these monitors require no maintenance. To protect the user Dynamic1Twin systems are equipped with a safety system which stops the movements in case of resistance detection. They are remotely controllable and diagnosable through the ERT interfaces in a very easy and effective way.

## TECHNICAL SPECIFICATIONS

**Display**

Size	Full HD, 18.5" TFT Active Matrix widescreen
Resolution	1920 (h) x 1080 (v)
Brightness	400 cd/m2
Contrast ratio	1500:1
Pixel	0.213 (h) x 0.213 (v) mm
Viewing angle	85°/85° (u/d) / 85°/85° (l/r)
Viewing area	408.96 (h) x 230.04 (v) mm
LED backlight lifespan	50.000 hrs
Response time	Tr +Tf 35 ms
Temperature (operating/storage)	Operating 0°C – +40°C Storage -20°C – +60°C

**Materials**

Frame	Anodised aluminium
Cover plate	Stainless steel, matt or prepared for underneath installation. Electrical powered lift system with variable speed.

**Connectivity**

Input signal	DVI-I (1 input for each panel) – HDCP Compliant DVI-D (1 input for each panel) – HDCP Compliant
RJ45 CAT5 (with loop)	Addressable RS422 monitor control by AHnet protocol
GPI (SubD9)	Up/Down control

**Control**

RJ45, RS-422 (I/O)
Addressing
Termination switch
GPI
IR Remote control (monitor adjustments): 1 / 5

**Movement's Control**

User interface on monitor	(Up/Down)
Remote	RS-422 I/O/GPI

**Electrical**

Low voltage (external power supply)	100-240Vac, 47/63Hz, 12Vdc
Power consumption	80W

**Mechanical**

Monitor Dimensions:	
Screen	461 x 289 x 40 mm [18.15" x 11.40" x 1.58"]
Upper cover plate	575 x 95 mm [22.63" x 3.73"]
Housing below the table	531.4 x 591 x 83.5 mm [20.9" x 23.3" x 3.3"]
Weight	TBD
Shipping Dimensions:	
Weight	TBD
Shipping Box	TBD

## OPTIONS

- DynamicLoop
- DynamicShare
- Matte cover plate
- Built in DynamicTalk
- Motorised retractable synchronised single microphone
- Dual motorised synchronised microphones
- USB integrated on cover plate

- USB power integrated on cover plate
- Prepared for underneath installation, cover plate prepared to be veneered
- Customised cover plate with speaker and voting system
- Customised laser engraved logotype on the cover plate
- Monitor housing anodised in different colours

## CERTIFICATIONS

- CE

## WARRANTY

- 5 years limited warranty
- 2 years general warranty

ARTHUR HOLM

Albiral Display Solutions SL · Fàtima, 25 Sant Hipòlit de Voltregà 08512 Bcelona, Spain · +34 938 502 376 · marketing@arthurholm.com  
www.arthurholm.com

Arthur Holm is a registered brand of Albiral Display Solutions SL. Specifications subject to change without previous notice.

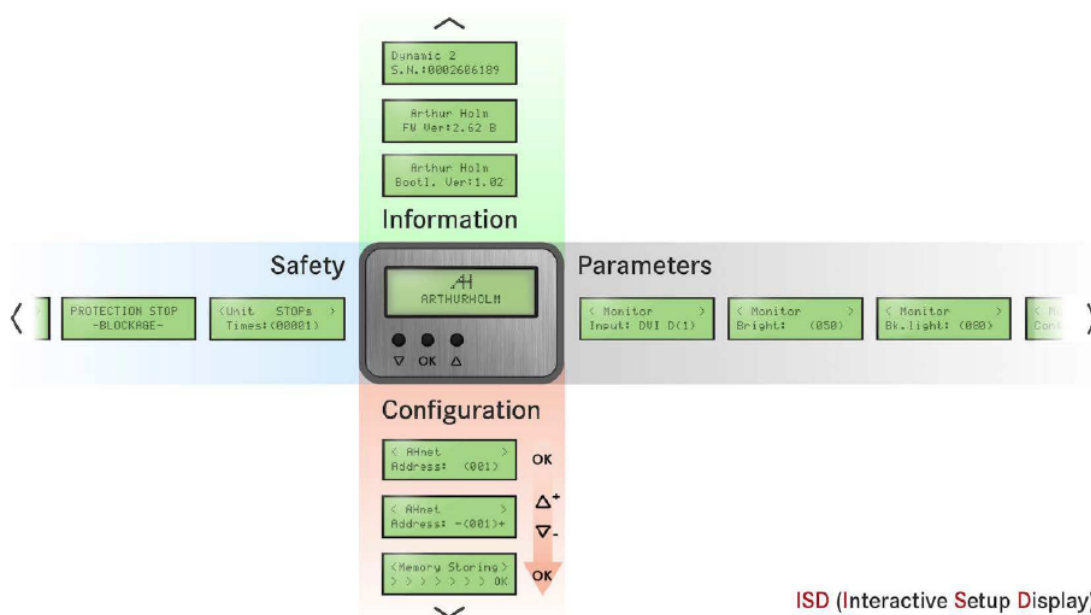
CONNECTIVITY PANEL



CONNECTIVITY

- 1- Power input
- 2- GPI control
- 3- DVI-D video input - digital (Screen 1)
- 4- DVI-I video input - analog/digital (Screen 1)
- 5- AHnet control interface
- 6- DVI-D video input - digital (Screen 2)
- 7- DVI-I video input - analog/digital (Screen 2)

INTERACTIVE SETUP DISPLAY



ISD (Interactive Setup Display)

ARCHITECT'S SPECIFICATIONS

Single motor retractable 18.5" Full HD motorised dual monitor. Low voltage. Double back to back mounted screens, inputs signals routed independently. Aluminium screen housing, natural anodised finishing with square corners design. Passive cover plate in brushed stainless steel for enhanced reliability. Lifting movement with a single electrical engine for increased reliability. DVI-I and DVI-D connectors. HDCP compliant inputs.

Compatible with AHnet open protocol over RS-422, allowing independent remote control of up to 30 units over a daisy-chain CAT-5 or CAT-6 line. Additional control by

means of the buttons integrated on the cover plate that can be activated or deactivated by using the AHnet.

Easy to read Interactive Set-Up Display (ISD) 2,2"LCD display allowing individual remote configuration, operation & troubleshooting without removing monitor from furniture integration. Safety system that detects obstructions, stopping the unit. External power supply with 4-Pin XLR4 connector. Bottom connectivity for easy access and removal of monitor without disconnecting the monitor. Monitor housing total depth is 591 mm, plus additional spacing for connectors. Adjustable mechanical parameters through AHnet or ISD for calibration and adjustment of mechanics. Diagnostic readout on ISD for increase service and support.

ARTHUR HOLM

Albiral Display Solutions SL · Fàtima, 25 Sant Hipòlit de Voltregà 08512 Bcelona, Spain · +34 938 502 376 · marketing@arthurholm.com  
www.arthurholm.com

Arthur Holm is a registered brand of Albiral Display Solutions SL. Specifications subject to change without previous notice.

