

DynamicReceptionMonitor

Professional Reception Monitor



FEATURES

- Ergonomic
- Motorised adjustable height
- Adjustable viewing angle (horizontally and vertically)
- 140 degrees rotation
- Exquisite materials
- 24/7 Design
- Three times longer lifespan than a standard monitor
- Maintenance free
- HDCP Compliant
- Energy saving
- Easy to install
- Passive cooling

GENERAL

Motorised adjustable reception monitor for a perfect fit. Quick motorised adjustment to match each individual needs when working to create a correct and preferable work environment at the front desk.

The professional Arthur Holm DynamicReceptionMonitor is designed using the latest professional technologies to ensure a perfect workplace. It offers a non-obstructive design in which all technical interfaces and cables are internal, so the front desk is free of cables and obstructive components, creating a cleaner work environment.

The DynamicReceptionMonitor has been designed to be integrated in tables or desks. The base of the monitor is installed on the surface and its connectivity is placed below the table, making the installation clean and minimalistic.

The elegant monitor housing is made of milled aluminium and stainless steel and it includes an antiglare protection glass with black marking. The stainless steel rotary arm of the monitor offers a motorised adjustable height for a perfect fit.

The DynamicReceptionMonitor is available in 22" and other sizes upon request.

ARTHUR HOLM

Albiral Display Solutions SL · Fàtima, 25 Sant Hipòlit de Voltregà 08512 Bcelona, Spain · +34 938 502 376 · marketing@arthurholm.com
www.arthurholm.com

Arthur Holm is a registered brand of Albiral Display Solutions SL. Specifications subject to change without previous notice.

Display

Size	Full HD 21.5" TFT Active Matrix
Resolution	1920 (h) x 1080 (v)
Brightness	250 cd/m2
Contrast ratio	1000:1
Pixel	0.247 (h) x 0.247 (v) mm
Viewing angle	178° (v)/178° (h)
Viewing area	476.064 (h) x 267.786 (v)
LED backlight lifespan	30.000 hrs
Response time	Tg-g 14 ms
Temperature (operating/storage)	Operating 0°C – +40°C Storage -20°C – +60°C

Materials

Cabinet	Aluminium and anti-reflective glass
Support	Stainless steel. Adjustable viewing angle

Connectivity

Input signal	12V Power connector 1 HDMI aerial connector
--------------	--

Electrical

Low voltage (external power supply)	100-240Vac, 47/63Hz, 12Vdc
Power consumption screen	32W
Power consumption lift	95W (only during height adjustment)

Mechanical

Monitor dimensions	539 x 369 x 28 mm [21.22" x 14" x 1.10"]
Support dimensions	Ø50.90 x 290 mm [2.00" x 11.42"]
Housing below the table	Ø70.00 x 457 mm [2.76" x 17.99"]

Shipping Dimensions

Weight	TBC
Shipping Box	TBC

CERTIFICATIONS

- CE

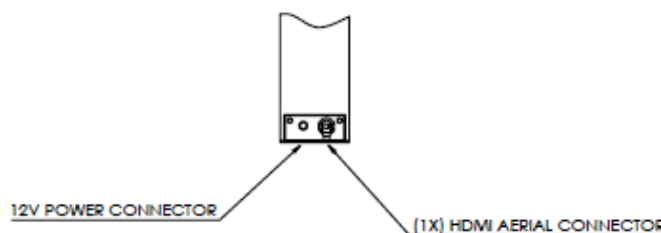
WARRANTY

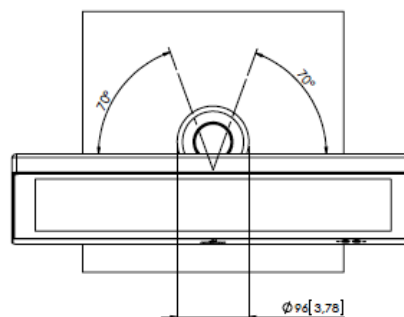
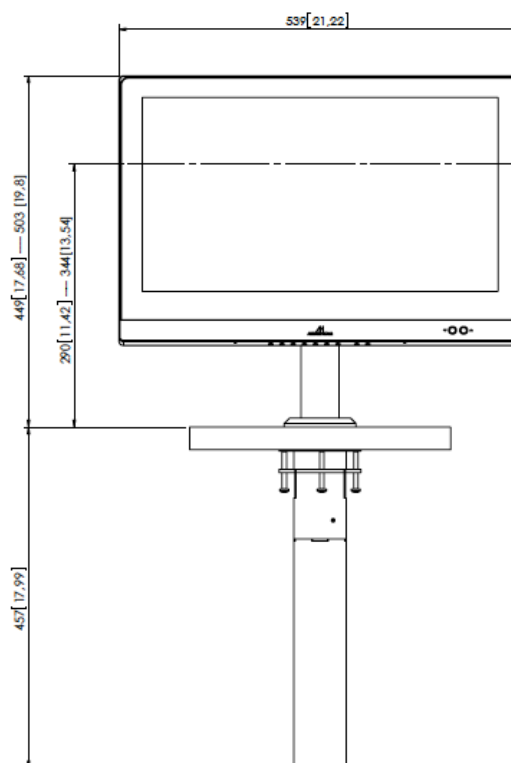
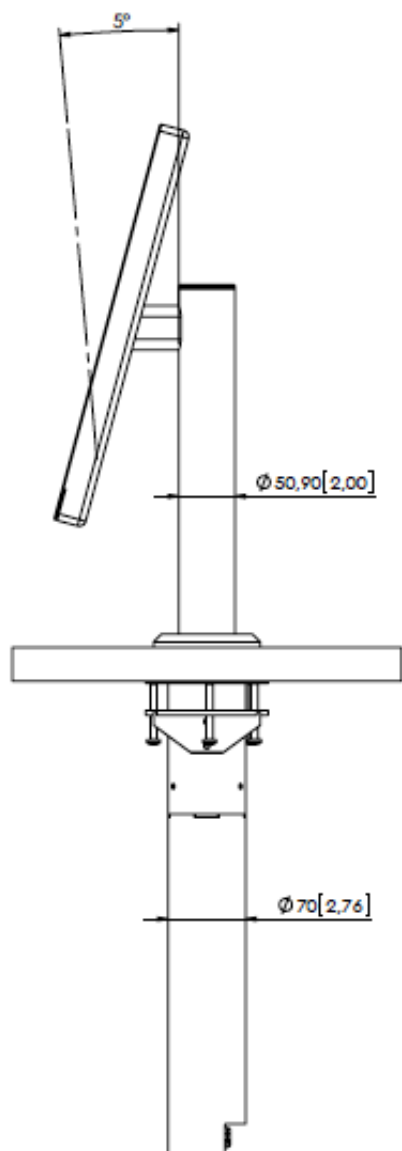
- 2 years general warranty

ARCHITECTS SPECIFICATIONS

Professional 21,5" Full HD widescreen motorised monitor for fixed installation. Motorised adjustable height, front OSD push and hold, adjustable horizontal and vertical viewing angle, rotatory (70 degrees left, 70 degrees right). Monitor housing made of a solid aluminium block with square corners. Stainless steel monitor support. Double sided antiglare front glass with black marking. Internal and no visible cables, connectors, screws and ventilation holes. Passive cooling. Under desk clamp mounting, HDMI connection, HDCP compliant. External power supply.

MONITOR CONNECTIVITY





PATTERN HOLE

