

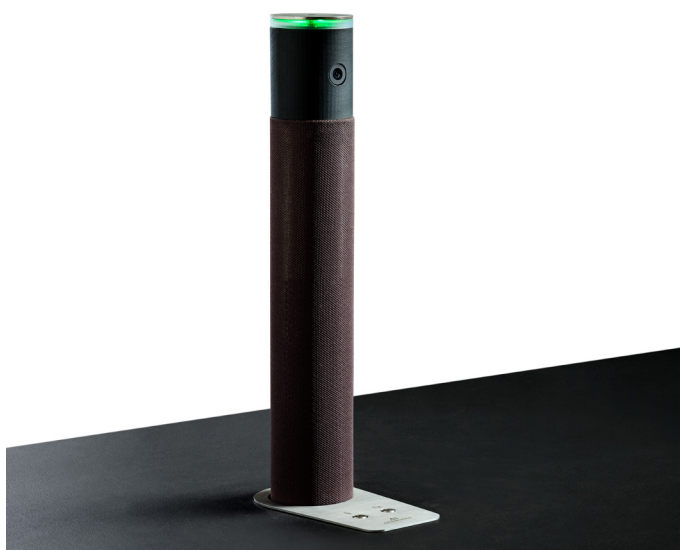
ARTHUR HOLM DynamicMCS

High-resolution, motorised video camera, microphone and loud speaker for furniture integration

DynamicMCS



Now you see me,
Now you don't!



FEATURES

- Motorised pop-up video camera, microphone and loudspeaker for furniture integration
- Manual rotation 45° left and right
- Stainless steel cover top
- Camera: HD-SDI BNC out

- Microphone: Analogue line output-terminal blocks connectors
- 2 colour controllable LED ring
- Up and Down capacitive button
- Serial control and remote diagnose (AHNet)
- Wireless connectivity for setup and control (AHlink)
- Auto Mechanical Movement Calibration (AH-AMMC)

GENERAL

Motorised high-resolution video camera, microphone and loudspeaker for furniture integration, HD-SDI camera.

Omnidirectional microphone with 1 audio output: balanced analogue via terminal block line array speakers (no phantom required) .

The hybrid camera housing is built in steel and composite materials in a black, non-reflective mat finish. A capacitive touch button in the steel cover raises and lowers the camera, microphone and loud speaker. The camera can be turned 45° horizontally to each side (manually). DynamicMCS can also be remotely controlled via AHNet (RS-422), GPI or AHlink.

ARTHUR HOLM

Albiral Display Solutions SL · Fàtima, 25 Sant Hipòlit de Voltregà 08512 Barcelona, Spain · +34 938 502 376 · marketing@arthurholm.com · www.arthurholm.com
Arthur Holm is a registered brand of Albiral Display Solutions SL. Specifications subject to change without previous notice.

Technology serving Design

TECHNICAL SPECIFICATIONS

Camera:

- HD-SDI, BNC Output.
- Pickup Device 1/2.8(D-6.46mm.) 2MP Sony Color CMOS Sensor
- Scanning System 16:9 Progressive
- Sync. System Internal
- Total Pixels 2.16MP [1945(H)x1109(V)]
- Active Pixels 2.12MP [1937(H)x1097(V)]
- Min. Illumination 0.01Lux(F2.5-30IRE), 0.0003Lux(DSS on)
- Video Out HD-SDI: 1080p@25/30, 720p@25/30/50/60 CVBS or Analog HDEX-SDI: 1080p@25/30/50/60, 720p@25/30/50/60/
- Lens Fixed f=4mm., F2.5
- Angle of View 92.5°(D), 78°(H), 44.5°(V)

Microphone:

- Built-in preamplifier with DSP process. Balanced line output (terminal block).
- Sensitivity : 1KHz, 94dB SPL = 1,4dBV
- Acoustic Overload Point : 124 dB SPL

Speakers:

- 4x1" speaker array:
- Class-D Built-in 18W. Amplifier
- DSP process
- Balanced line input, level line +4dB (terminal block)

Control:

- Up/Down - Touch Button:
- Up/Down - GPI
- Full control - RS422 (AHnet)
- **AHlink** APP, for diagnosis and configuration.

OPTIONS:

- Optical Microphone (Mute) & Camera (OFF) buttons, Control Panel.

Electrical:

- External PSU 100-240Vac, 47/63Hz, to 12V 6,25A
- Power consumption 35W

WARRANTY

- 2 years general warranty

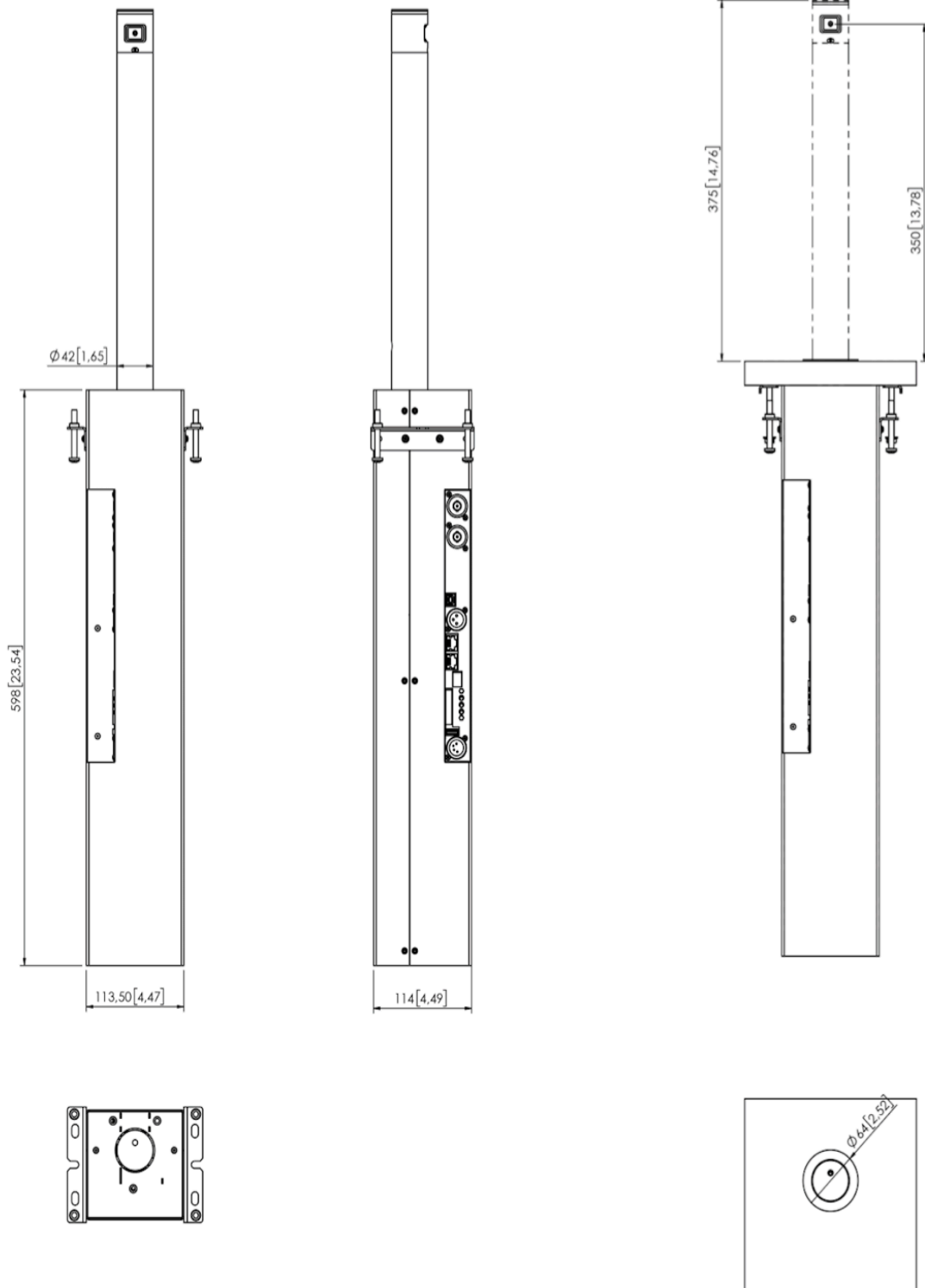
CERTIFICATIONS

- CE

ARTHUR HOLM

Albiral Display Solutions SL · Fàtima, 25 Sant Hipòlit de Voltregà 08512 Barcelona, Spain · +34 938 502 376 · marketing@arthurholm.com · www.arthurholm.com
Arthur Holm is a registered brand of Albiral Display Solutions SL. Specifications subject to change without previous notice.

Technology serving Design



ARTHUR HOLM

Albiral Display Solutions SL · Fàtima, 25 Sant Hipòlit de Voltregà 08512 Barcelona, Spain · +34 938 502 376 · marketing@arthurholm.com · www.arthurholm.com
 Arthur Holm is a registered brand of Albiral Display Solutions SL. Specifications subject to change without previous notice.

Technology serving Design