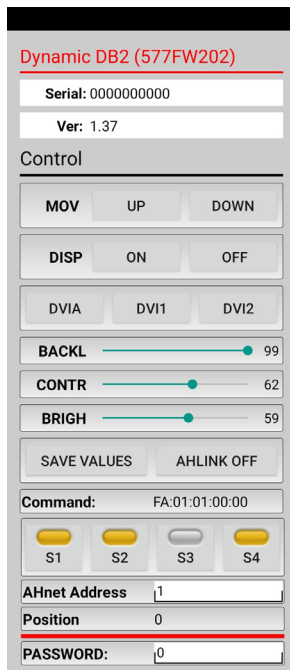
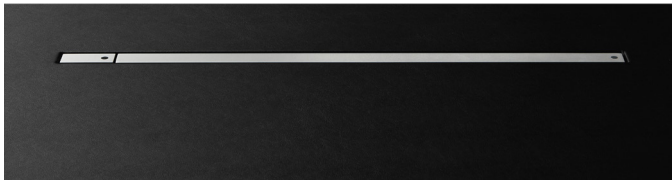
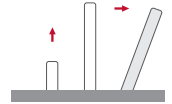


**DB2Share**

HDCP compliant retractable motorized monitor with DynamicShare



**Highlights**

- Vertical motorized monitor with 20° of inclination with input selection and input distribution
- Streamlined retractable HDMI cable
- 20 mm. max of thickness
- Milled and anodized aluminum housing
- Front anti-reflective 2 sides coated 2 mm. black edged glass
- No cover plate required
- Prepared for veneering
- View and Share capacitive buttons on the screen's glass
- Option of Priority button
- 3/HDMI inputs, HDMI Loop In/Loop Out for a max of 20 units RS422/RS485 I/O
- ISD: Interactive Setup Display for adjustment and service
- AHlink: Wireless connectivity for setup, adjustments, and control
- AH-AMMC: Auto Mechanical Movement Calibration

AHlink : the App for setup, control and diagnose



## General

Professional 17.3" motorized retractable monitor including a retractable HDMI cable and View and Share buttons on the front screen's glass. It is easy to integrate, intuitive to use (one operation sensor located on the top of the monitor frame and on the top of the retractable HDMI cable housing) and almost invisible when in retracted position (no cover plate, neatly streamlined into the table). The HDMI input can be selected by touching on the View button that is located on the screen's glass and can be shared with the rest of the monitors (max 20 monitors) in the meeting table by touching the Share button.

The monitor provides RS422/RS485 I/O, allowing the remote

control of the input selection, the share, movements, speeds, safety settings and brightness, contrast, and backlight adjustments.

The monitor can also be adjusted and controlled via a wireless application: AHlink. The AHlink Android and iOS App allows the access to the setup and control menu and to get the serial number and firmware version without removing the monitor from the table. The Auto Mechanical Movement Calibration will automatically adjust the speed and safety protection parameters. The use of the ERT-30 and ERT-60 enables an automatic individual address configuration of all the monitors.

## Technical Specifications

### Display

Size	FULL HD 17.3" TFT Active Matrix, widescreen format. LED backlight
Resolution	1920 (h) x 1080 (v)
Brightness	400 cd/m2
Contrast ratio	600:1
Pixel	0.1989 (h) x 0.1989 (v) mm
Viewing angle	60°/80°(u/d) 80°/80°(l/r)
Viewing area	381.888 (h) x 214.812 (v) mm
LED backlight lifespan	50,000 hrs
Response time	Tr 37ms, Tf 3 ms
Temperature (operating/storage)	Operating 0°C ~+40°C Storage -20°C ~+60°C

### Materials

Monitor housing	Solid mechanized aluminum housing with anodized finish. Front black serigraphed glass.
-----------------	--

### Connectivity

Input signal	1x HDMI retractable cable input 2x HDMI input below the monitor HDMI loop IN/OUT
RJ45 CAT6 (with loop)	Addressable RS422 monitor control by AHnet protocol
GPI (SubD9)	Up/Down control
USB	For service

### Control

RJ45, RS-422 (I/O), AHNet protocol
------------------------------------

### Addressing

Termination switch

IR Remote control (monitor adjustments): 1/5

### Movement's Control

User interface on monitor	(Up/Down) Capacitive touch sensor
Remote	RS-422 I/O, GPI

### Electrical

External power supply	100-240 Vac, 47/63Hz, 12Vdc
Power consumption	50W

### Accessories

ERT	Ethernet Interface Unit
-----	-------------------------

### Mechanical

#### Monitor Dimensions:

Screen	424 x 257 x 20 mm [16.69" x 10.11" x 0.79"]
Top frame	472 x 20 mm [18.58" x 0.79"]
Housing below the table	575 x 607 x 80 mm [20.6" x 23.9" x 3.15"]
Weight	25 Kg / 55.12 Lbs

#### Shipping Dimensions:

Weight	26 Kg / 57.32 Lbs
Shipping Box	625 x 175 x 715 mm [24.60" x 6.8" x 28.14"]

## ARTHUR HOLM

Albiral Display Solutions SL · Fàtima, 25 Sant Hipòlit de Voltregà 08512 Barcelona, Spain · +34 938 502 376 · marketing@arthurholm.com · www.arthurholm.com  
Arthur Holm is a registered brand of Albiral Display Solutions SL. Specifications subject to change without previous notice.

Technology serving Design

## Options and accessories

- Projected capacitive multi-touch screen
- Priority button
- External box to allow the connection of third party monitors, projectors or video wall systems in a DynamicShare configuration. 3/HDMI Inputs, 1/HDMI Output, dedicated ports for Loop In and Loop Out, HDCP compliant, Ethernet external control, Digital audio Output.
- Kit of transmitter and receiver to extend the HDMI connection above 5 meters

## Finishes

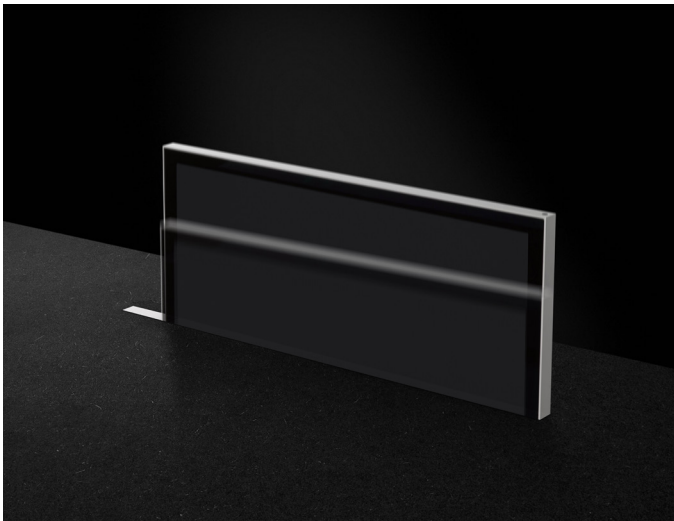
- Tabletop frame
- Black anodized
- Gold
- Bronze
- Painted

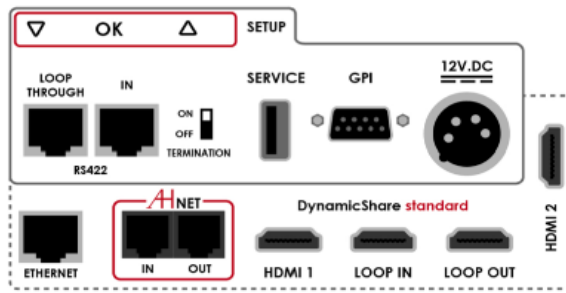
## Certifications

- CE
- FCC
- IECEE
- CB
- RoHs
- BIS

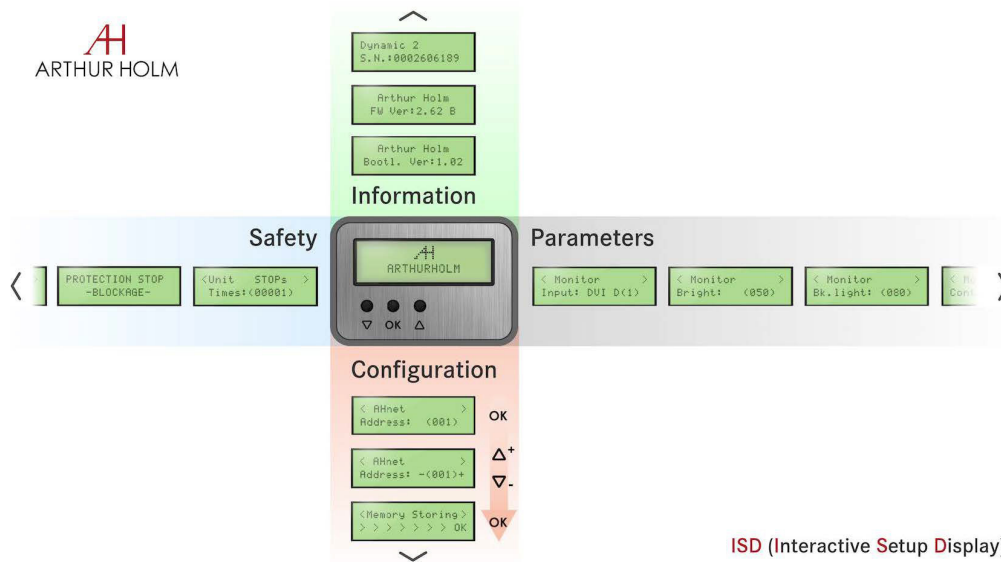
## Warranty

- 5 years for the mechanical parts





Interactive Setup Display (ISD)

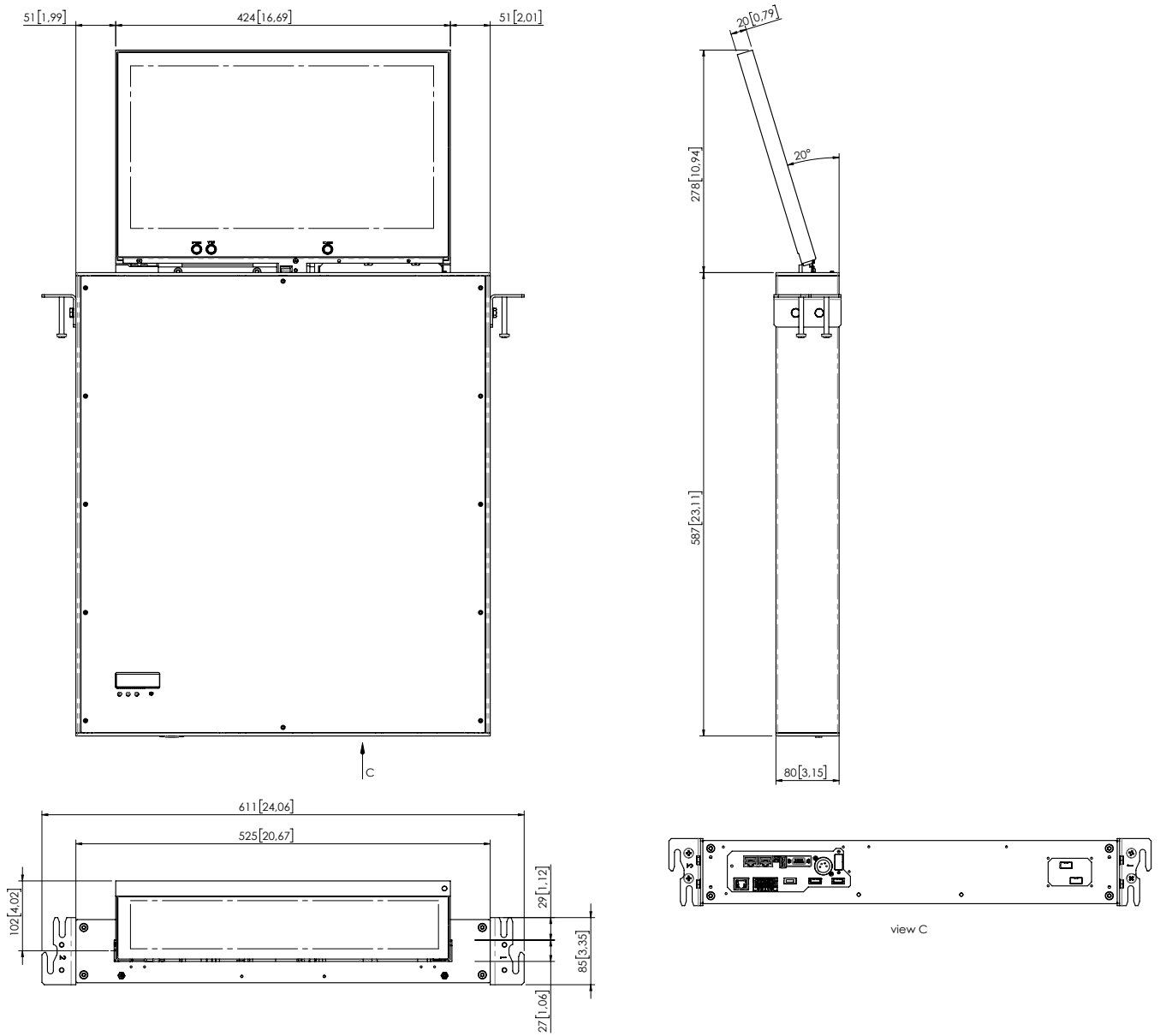


ISD (Interactive Setup Display)

Consultants, architects and engineers specifications

Vertically retractable motorized 17.3” Full HD professional monitor including input signal selection and distribution. The monitor housing shall be made of milled anodized aluminum with a max thickness of 20 mm. and the screen should be protected with an anti-reflective 2 sides coating black edged 2 mm. glass. An independently retractable HDMI cable shall raise vertically as an extension of the monitor housing. The monitor and the retractable HDMI cable shall be flush with the table when in retracted position and a capacitive button shall be placed at the top of the monitor’s frame to activate the movements. The monitor shall provide full control to select, view and share the different HDMI inputs by pushing the capacitive touch buttons placed on the glass below the monitor’s viewing area. The monitor shall have a brightness of 400 cd/m2, a contrast

ratio of 600:1 and a backlight life span of 50,000 hours. The monitor shall provide 3 HDMI HDCP inputs by a licensed HDCP monitor manufacturer (1 input retractable and 2 fixed connectors at the bottom of the monitor housing) and 1 HDMI Loop In and Loop out allowing a connection up to 20 units. The monitor shall provide an addressable RS-422 and an easy-to-read Interactive Setup Display (ISD) to access the safety parameters, the setup of the speeds and the control of brightness, contrast and backlight. The monitor shall be able to run an auto-adjustment program to reset the factory setups. The monitor shall provide a USB port for firmware upgrades. The monitor shall be controlled by a wireless Andriod and iOs App providing information about the monitor’s serial number and providing access to the control and to the setup menu.



ARTHUR HOLM

Albiral Display Solutions SL · Fàtima, 25 Sant Hipòlit de Voltregà 08512 Barcelona, Spain · +34 938 502 376 · marketing@arthurholm.com · www.arthurholm.com  
 Arthur Holm is a registered brand of Albiral Display Solutions SL. Specifications subject to change without previous notice.

Technology serving Design