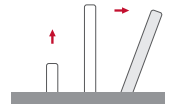
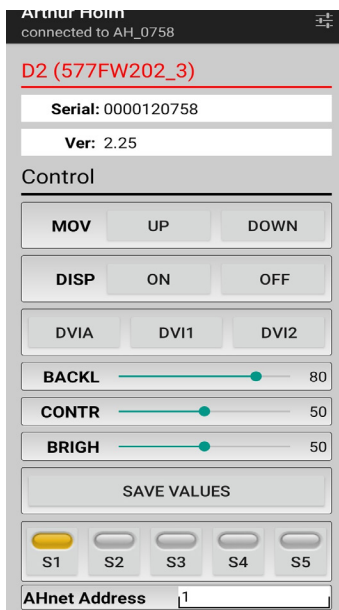


## DynamicX2Talk

HDCP compliant aluminum retractable motorized monitor with integrated independent microphone lift system



This picture corresponds to a customized version of DynamicX2Talk



### Highlights

- Aluminum retractable monitor with an independent microphone lift
- Vertical motorized monitor with 20° of inclination
- Patented single engine mechanism for Up/Down and tilt movements
- 360° LED lighting ring to indicate microphone status
- PA and Conference working mode
- Energy saving design, low consumption video controller
- 2/DVI inputs, HDCP compliant
- RS422/RS485 I/O
- ISD: Interactive Setup Display for adjustments and service
- AHlink: Wireless connectivity for setup, adjustments, and control
- AH-AMMC: Auto mechanical Movement Calibration

AHlink : the App for setup, control and diagnose



## General

Arthur Holm DynamicX2Talk is a motorized retractable product range that includes an independent lift for gooseneck microphones. The retractable monitor provides silent, reliable and harmonic movements by the use of a patented solution with one only engine. This automatic system is equipped with a variable speed system to raise, lower and tilt 20° to ensure the best ergonomics, viewing angle and visibility. The integrated independent lift system for microphones provides a rounded microphone coverlid and it not only makes the microphone disappear within the desk surface, but it also provides a pleasant light to indicate its status. Thanks to its protective and patented lighting ring, the microphones can be safely stored and protected making meeting and conference spaces more flexible and versatile. This system provides two different working modes: PA and Conference. When in PA mode, a push button placed on the stainless steel cover plate allows to activate or deactivate the microphone and the LED ring will indicate the status by changing colour from red to green.

The system will automatically silence the microphone when retracting.

When in conference mode, the microphone will be always active and both, the light ring and the access to the push button on the cover plate, will be available via GPI and GPO for remote control. The microphone lift can be adjusted to the exact length of the microphone via AHnet and AHlink. Both the monitor and the microphone's lift operate with only one external power supply. The AHlink is an excellent tool to diagnose, verify and configure DynamicX2 and DynamicTalk. The monitor is equipped with an Interactive Setup Display (ISD) allowing the control, setup and diagnose of the monitors. Monitors provide RS-422 I/O allowing the remote control of movements, speeds, safety settings, brightness, contrast and backlight. The monitors are equipped with an Auto Mechanical Calibration Movement System (AH-AMMC). The use of the Arthur Holm's ERT will enable the address configuration of all the monitors installed in a table by simply pressing a button. The app AHlink Android and iOS allows getting the unit's serial number without the need to have access to the unit from below the table.

## Technical Specifications

### Display

Size	FULL HD 21.5" TFT Active Matrix, widescreen format. LED backlight
Resolution	1920 (h) x 1080 (v)
Brightness	350 cd/m2
Contrast ratio	1000:1
Pixel	0.24975 (h) x 0.24975 (v) mm
Viewing angle	89°/89°(u/d) 89°/89°(l/r)
Viewing area	476.064 (h) x 267.786 (v) mm
LED backlight lifespan	50,000 hrs
Response time	Tr 12ms, Tf 10ms
Temperature (operating/storage)	Operating 0°C ~ +40°C Storage -20°C ~ +60°C

### Materials

Monitor housing	Anodized Aluminum
Glass	AR 2-side with an anti-reflective coating on the glass surface. Thickness: 3.0 ± 0.3 mm
Cover plate	Stainless steel

### Connectivity

Input signal	DVI-I (1 input) – HDCP Compliant – Digital / Analog DVI-D (1 input) – HDCP Compliant – Digital
RJ45 CAT6 (with loop)	Addressable RS422 monitor control by AHnet protocol
GPI (SubD9)	Up/Down control
USB	For service

### DynamicTalk Control

Up/Down Control	Button on upper cover plate GPI contact closer RS-422 (RJ45 CAT 6)
Microphone control	Button on upper cover plate
Customized function	Button on upper cover plate
GPI/O	LEDs control and switch

### Movement's Control

User interface on monitor	(Up/Down) Buttons on cover plate
Remote	RS-422 I/O, GPI

### Electrical

External power supply	100-240 Vac, 47/63Hz, 12Vdc
Consumption	60W

### Accessories

ERT-30 / ERT-60	Ethernet Interface Unit
-----------------	-------------------------

### Mechanical

Monitor Dimensions:	
Screen	539 x 304 x 25 mm [21.22" x 11.97" x 0.98"]
Upper cover plate	736 x 95 x 3 mm [28.98" x 3.74" x 0.12"]
Housing below the table	736 x 602 x 80 mm [28.98" x 23.70" x 3.15"]
Weight	26,5 Kg / 58.4 Lbs
Shipping Dimensions:	
Weight	29 Kg / 63.9 Lbs
Shipping Box	830 x 185 x 725 mm [32.68" x 7.3" x 28.54"]

#### ARTHUR HOLM

Albiral Display Solutions SL · Fàtima, 25 Sant Hipòlit de Voltregà 08512 Barcelona, Spain · +34 938 502 376 · marketing@arthurholm.com · www.arthurholm.com  
Arthur Holm is a registered brand of Albiral Display Solutions SL. Specifications subject to change without previous notice.

Technology serving Design

## Options and accessories

- 2/ HDMI INPUTS
- DynamicLoop
- DynamicShare
- Built-in USB or HD-SDI camera (adjustable via AHlink)
- DynamicTalk
- Synchronized microphone
- Projected capacitive multi-touch screen
- Connectors on the cover plate

## Finishes

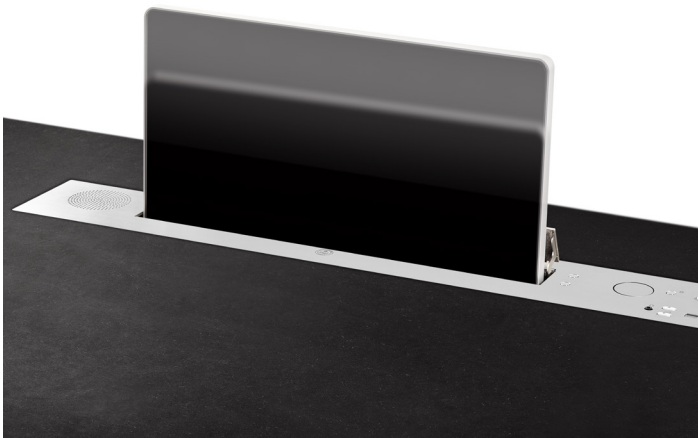
- Laser engraved logo
- UnderCover for veneer
- Matte cover plate
- Underneath installation
- Black anodized
- Gold
- Bronze
- Painted

## Certifications

- CE
- FCC
- IECEE
- CB
- RoHs
- BIS

## Warranty

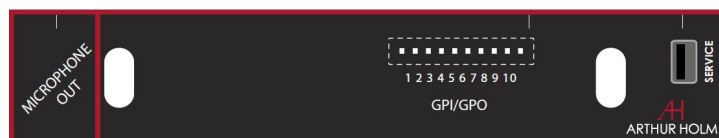
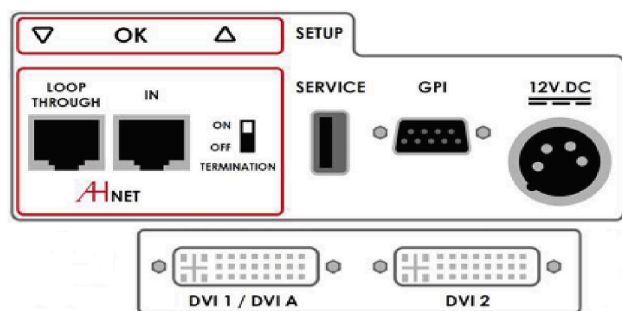
- 5 years for the mechanical parts



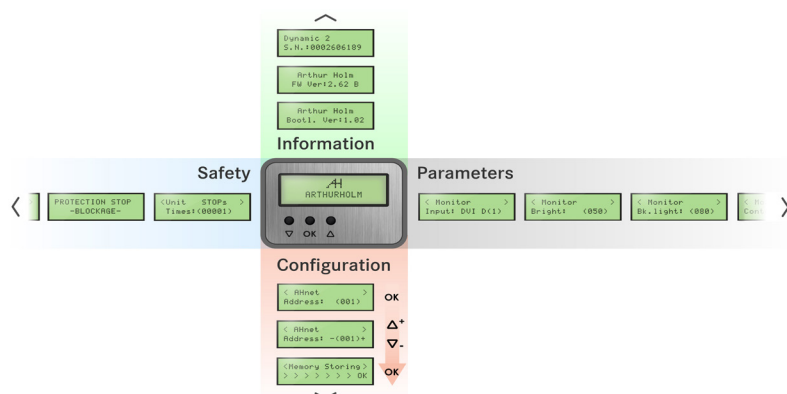
### ARTHUR HOLM

Albiral Display Solutions SL · Fàtima, 25 Sant Hipòlit de Voltregà 08512 Barcelona, Spain · +34 938 502 376 · [marketing@arthurholm.com](mailto:marketing@arthurholm.com) · [www.arthurholm.com](http://www.arthurholm.com)  
Arthur Holm is a registered brand of Albiral Display Solutions SL. Specifications subject to change without previous notice.

Technology serving Design



## Interactive Setup Display (ISD)



## Consultants, architects and engineers specifications

Vertically retractable motorized 21.5" Full HD professional monitor including a universal microphone lift system. The monitor housing shall be made of milled anodized aluminum and the screen shall be protected with antireflective 2 side coating black edged 3 mm glass. The monitor shall make the rise/lower and tilt movements with one only engine. The monitor cover plate shall provide a passive opening system and shall be made of 3 mm brushed stainless steel. The monitor shall have a brightness of 350 cd/m2, a contrast ratio of 1000:1 and a backlight lifespan of 50,000 hours. The monitor shall provide 2 DVI HDCP inputs by a licensed HDCP monitor manufacturer. The monitor shall provide an addressable RS-422 and an easy to read Interactive Setup Display (ISD) to access the safety parameters, the setup of the speeds and the control of the brightness, contract and backlight. The monitor shall be able to run an autoadjustment program to reset the factory setups. The monitor shall provide a USB port for firmware upgrades. The monitor shall be controllable by a wireless Android and iOS app providing information about the monitor's serial number, and providing access to the control and to the setup menu. The system shall Include an independent lift system for 3 pin XLR gooseneck microphones in the cover plate. Both the monitor and the microphone's lift operate with only one external power supply. This cover plate shall provide a rounded microphone coverlid and 3 operation buttons; open/close, mute/unmute the microphone and free GPO button.

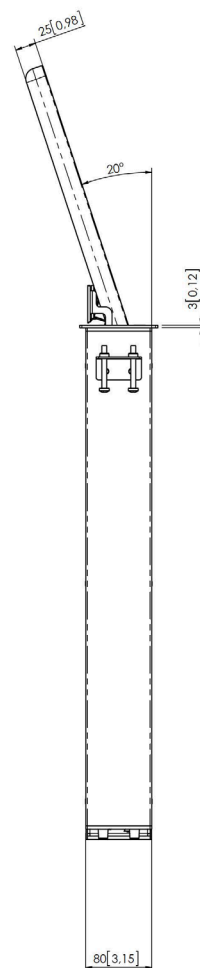
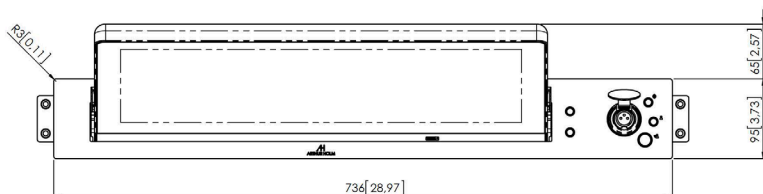
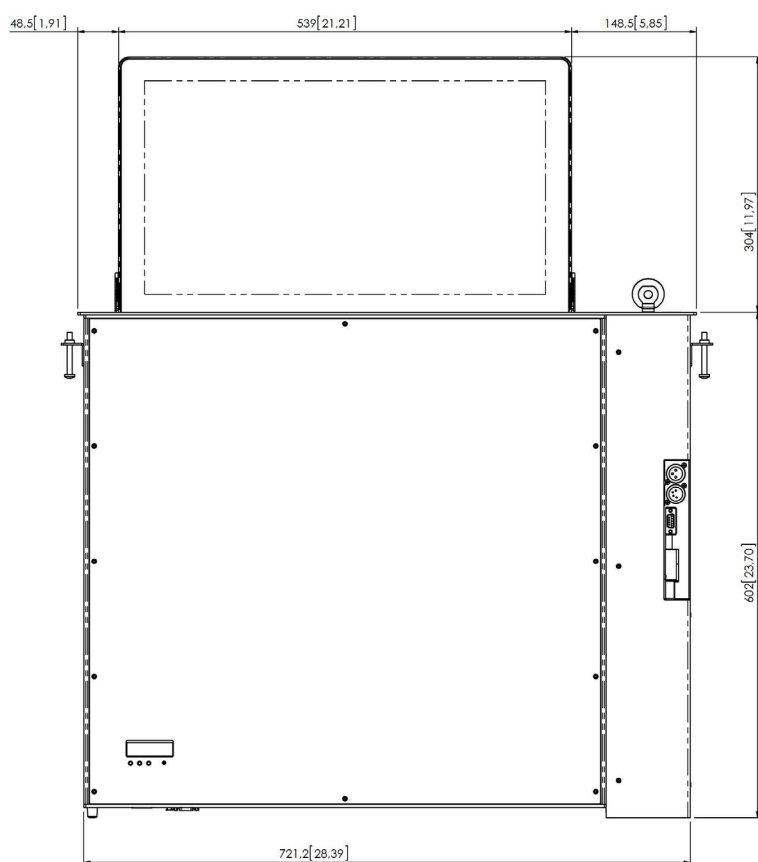
The lift system includes a translucent plastic rounded ring to centre the microphone during its rise and retract movement from a position hidden below the cover to a top position projected through the cover, avoiding the microphone from touching the cover plate, damaging or blocking when retracting. This ring shall provide a programmable green and red LED to indicate the microphone status and shall be visible 360°. The system shall be equipped with RS-422, RJ-45 and AHnet open protocol allowing individual remote control, setup and diagnostic of up to 30 units per line. GPI (contact close to control movements), GPO (contact close to detect button activation) and a USB for firmware updates.

The unit shall provide a safety system that detects obstructions and causes the unit to stop with an audio indication. The unit shall provide and auto-calibration mode to reset mechanical speeds and safety adjustments. The system shall provide an automatic RS-422 addressing system when used in combination with ERT-30 and ERT-60. The unit shall be compatible with a wireless app that allows the exact adjustment of the microphone length, facilitates the unit's serial number, allows the activation and de-activation of the RS-422 termination and allows to change the working mode from PA to Conference.

### ARTHUR HOLM

Albiral Display Solutions SL · Fàtima, 25 Sant Hipòlit de Voltregà 08512 Barcelona, Spain · +34 938 502 376 · marketing@arthurholm.com · www.arthurholm.com  
Arthur Holm is a registered brand of Albiral Display Solutions SL. Specifications subject to change without previous notice.

Technology serving Design



## ARTHUR HOLM

Albiral Display Solutions SL · Fàtima, 25 Sant Hipòlit de Voltregà 08512 Barcelona, Spain · +34 938 502 376 · marketing@arthurholm.com · www.arthurholm.com  
Arthur Holm is a registered brand of Albiral Display Solutions SL. Specifications subject to change without previous notice.

Technology serving Design