

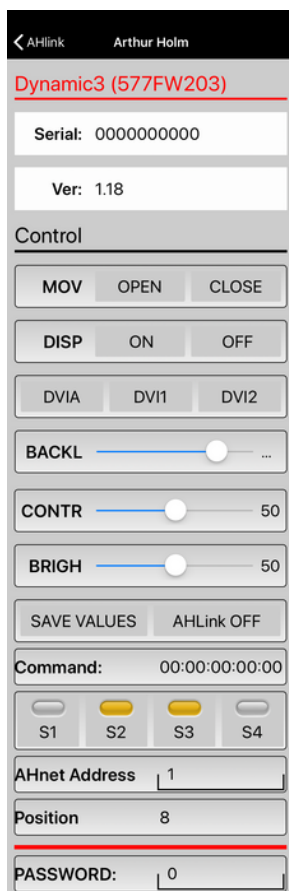
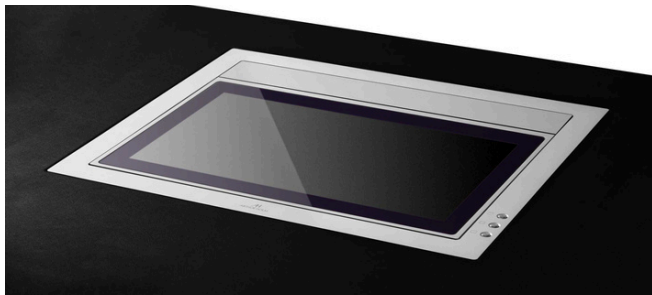


ARTHUR HOLM

AH15D3RHDGA

## Dynamic3

HDCP compliant aluminum foldable and rotatable motorized monitor



AHlink : the App for setup, control and diagnose



### Highlights

- Opens, folds down and rotates 180°
- Adjustable and memorizable tilt angle from 90° to 110°
- Automatic image flip
- Synchronized tray lift movement
- Floating security sensor
- Entirely built of aluminum
- 2 DVI inputs HDCP compliant
- Front double-sided anti-reflective 2 sides coating 3mm black edged glass
- Low profile monitor enclosure
- Energy saving design, low consumption video controller
- Interactive Setup Display (ISD)
- HDCP compliant
- Energy saving design, low consumption video controller
- Wireless connectivity for setup and control
- Auto Mechanical Movement Calibration (AH-AMMC)

ARTHUR HOLM

Albiral Display Solutions SL · Fàtima 25 · 08512 Sant Hipòlit de Voltregà · Barcelona, Spain · +34 938 502 376 · marketing@arthurholm.com · www.arthurholm.com  
Arthur Holm is a registered brand of Albiral Display Solutions SL. Specifications subject to change without previous notice.

**Make Your Meetings Count!**

## General

Arthur Holm Dynamic3 is a motorized product range that folds and unfolds while keeping a low profile inside the working desk for a perfect integration in the furniture.

The screen's lifting system automatically activates the elevation of a tray where keyboard and mouse can optionally be placed. The operating system to lift the tray includes at least two cams on each side for pushing the platform and two braces connecting the base and the closest cams. The screen is protected with an anti-reflective 2 side coating 3 mm black edged glass. The monitor has a dual safety system that detects obstructions causing the unit to stop through a floating security sensor.

Dynamic3 is available from 15.6" to 21.5", with 2 DVI-HDCP compliant inputs and equipped with an interactive setup display (ISD) allowing the control, setup and diagnose of the monitors. Monitors provide RS-422 / RS-485 Full Duplex I/O allowing the remote control of movements, speeds, safety settings, brightness, contrast and backlight.

Dynamic3R has an additional movement, which allows the monitor to rotate 180° and be folded with the screen facing up.

The monitors are equipped with Auto Mechanical Movement Calibration (AH-AMMC). The use of the Arthur Holm's ERT will enable the address configuration of all the monitors installed in a table by simply pressing a button. The monitor is compatible with AHlink Android and iOS app allows access to the setup, diagnose and control menus.

## Options and accessories

- Projected capacitive multi-touch screen
- DynamicLoop
- DynamicShare
- Built-in DynamicTalk
- Integrated USB camera
- Integrated connectors on cover plate
- Retractable HDMI cable
- Keyboard and mouse
- Underneath installation
- Customer laser-engraved logo on the cover plate
- Black anodised
- Painted
- Gold finish
- ERT-30 / ERT-60

## Certifications

- CE
- FCC
- IECEE
- CB

## Warranty

- 5 years limited warranty
- 2 years general warranty



Keyboard and mouse are optional.

## Technical Specifications

### Display

Size	FULL HD 15.6" TFT Active Matrix, widescreen format. LED backlight
Resolution	1920 (h) x 1080 (v)
Brightness	400cd/m2
Contrast ratio	1500:1
Pixel	0.1792 (h) x 0.1792 (v) mm
Viewing angle	85°/ 85° (u/d) 85°/ 85° (l/r)
Viewing area	344.16 (h) x 193.59 (v) mm
LED backlight lifespan	50,000hrs
Response time	Tr + Tf = 35ms
Temperature	Operating 0° ~ +40°C Storage -20° ~ +60°C

### Materials

Monitor housing	Anodized aluminum
Glass	AR 2 side with an anti-reflective coating on the glass surface. Thickness: 3.0 ±0.3mm
Cover plate	Anodized aluminum

### Connectivity

Input signal	DVI-I (1 input) HDCP compliant DVI-D (1 input) HDCP compliant
RJ 45 CAT6 (with loop)	Addressable RS-422/RS485 Full Duplex monitor control by AHnet protocol
GPI (subD9)	Movements control (opto isolated)
USB	For service (firmware upgrades)

### Control

RJ45, RS-422/RS-485 Full Duplex (I/O)
Addressing
Termination switch
GPI
IR Remote control (monitor adjustments): 1/5

### Movements Control

User interface on monitor	(Up/Down)
Remote	RS-422/RS-485 Full Duplex I/O/GPI

### Electrical

External power supply	100-240Vac, 50/60Hz, 12Vdc
Power consumption	40W

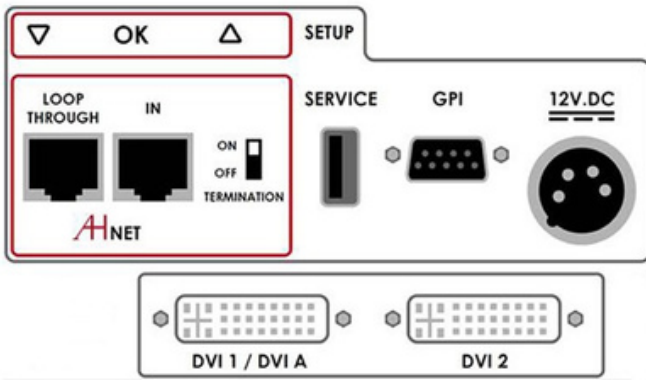
### Accessories

ERT	Ethernet interface unit
-----	-------------------------

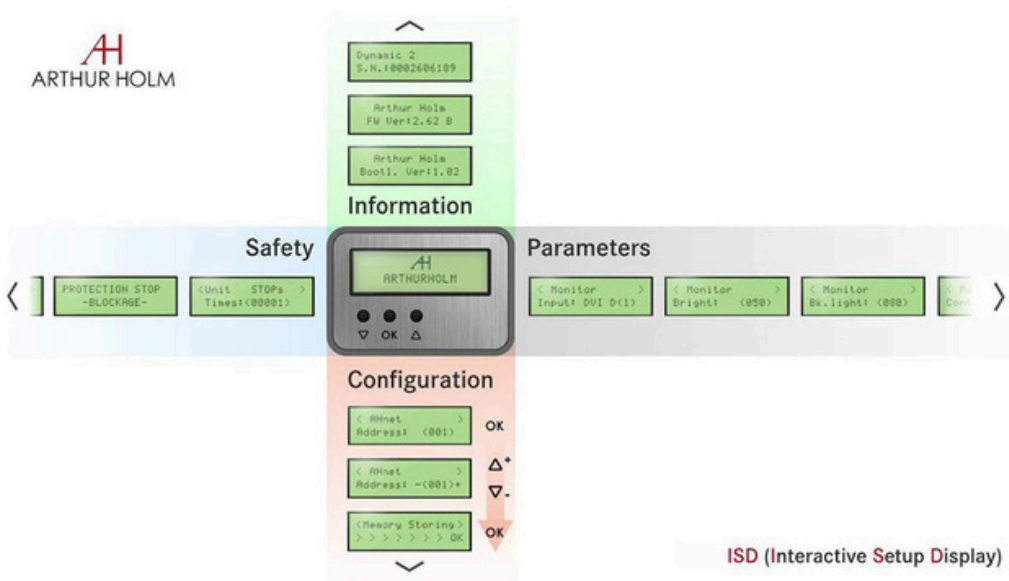
### Mechanical Dimensions

Screen	402 x 265 x 33mm [15.83" x 10.43" x 1.30"]
Upper cover plate	469 x 394mm [18.46" x 15.51"]
Housing below the table	459 x 377.5 x 102.5mm [18.07" x 14.86" x 4.03"]
Weight	16.4kg / 36.5lb

Connectivity panel



Interactive Setup Display (ISD)



Consultants, architects and engineers specifications

Motorized foldable and rotatable 15.6" Full HD professional monitor. The monitor housing shall be made of milled anodized aluminum and the screen shall be protected with anti-reflective 2 side coating black edged 3 mm glass. The monitor shall have a brightness of 400 cd/m2, a contrast ratio of 1500:1 and a backlight lifespan of 50,000 hours.

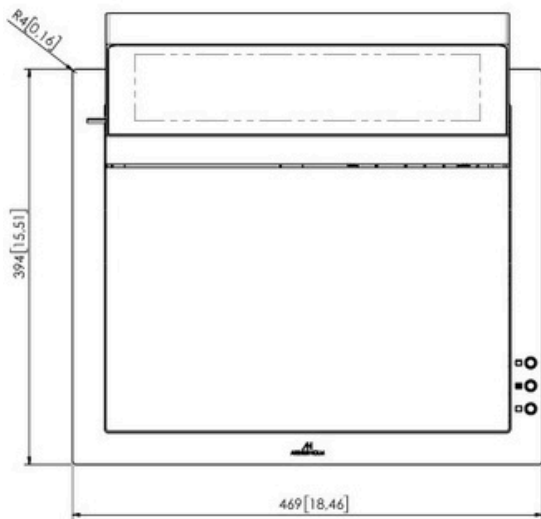
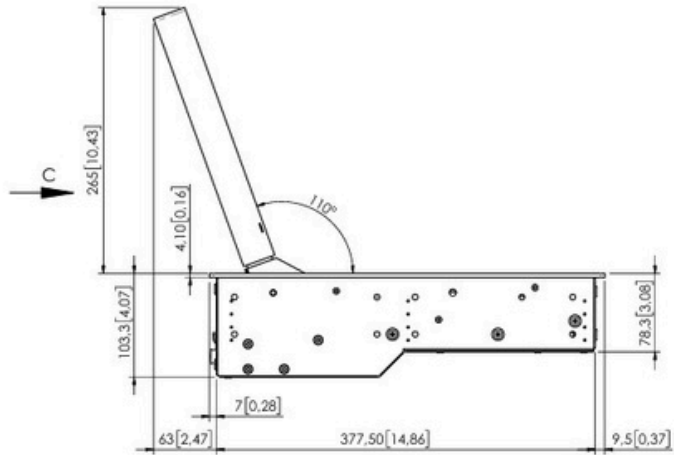
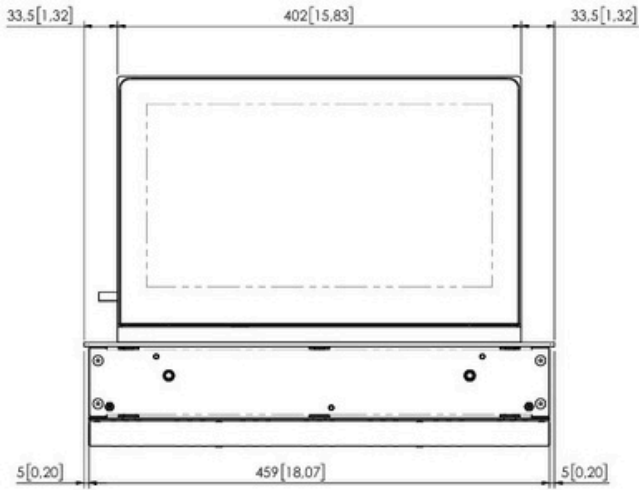
The monitor's opening mechanism shall activate automatically the rising of a synchronized aluminum tray covering the entire opening surface. The operating system to lift the tray shall include at least two cams on each side for pushing the platform and two braces connecting the base and the closest cams. The monitor shall provide 2 working positions: vertical with an adjustable tilt angle of up to 20° and horizontal flush on the table with the screen facing up or facing down. The monitor shall be capable to rotate 180° and be folded with the screen facing up or facing down.

The monitor shall provide an automated image adaptation for vertical and horizontal monitor position. The monitor shall have a dual safety system that detects obstructions causing the unit to stop through a floating security sensor.

The monitor shall provide 2 DVI HDCP Compliant inputs by a licensed HDCP monitor manufacturer. The monitor shall provide an addressable RS-422 /RS-485 Full Duplex and an easy-to-read interactive setup display (ISD) for the setup, diagnose and control, and shall be compatible with ERT-30 and ERT 60.

The monitor shall be able to run an auto-adjustment program to reset the factory security ratio between its factory movement speed and its protection parameters adapting the unit to the way it has been installed. The monitor shall provide a USB port for firmware upgrades. The monitor shall be compatible with the AHlink wireless Android and iOs App for the setup, diagnosis and control.

## General dimensions



VIEW C

