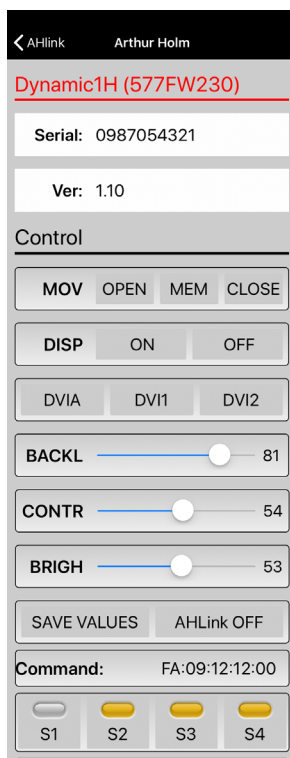
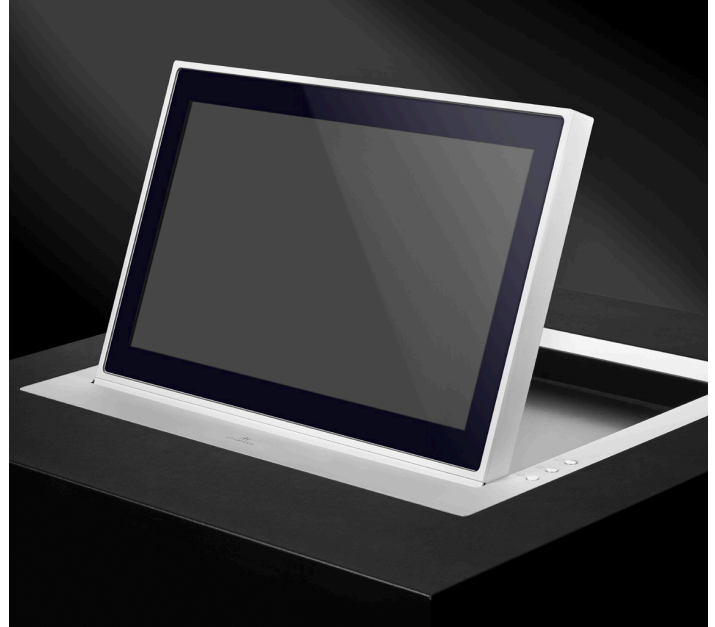
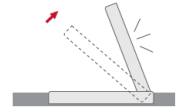


Dynamic 1H

HDCP compliant aluminum foldable motorized monitor



AHlink : the App for setup, control and diagnose



Highlights

- Horizontal motorized HDCP compliant monitor
- Rear gear
- Adjustable position from 0° to 70°
- Position memory
- Aluminum milled monitor housing
- Cover plate in aluminum
- Low profile enclosure
- Front double sided anti-reflective 2 sides coating 3 mm black edged glass
- Interactive Setup Display (ISD)
- Energy saving design, low consumption video controller
- Serial control and remote diagnosis
- Auto Mechanical Movement Calibration (AH-AMMC)
- Compatible wireless connectivity for setup and control via AHlink

ARTHUR HOLM

Albiral Display Solutions SL · Fàtima, 25 08512 Sant Hipòlit de Voltregà Barcelona, Spain · +34 938 502 376 · marketing@arthurholm.com · www.arthurholm.com
Arthur Holm is a registered brand of Albiral Display Solutions SL. Specifications subject to change without previous notice.

Make Your Meetings Count!

General

Arthur Holm Dynamic1H is a motorized foldable product range that provides a silent and robust lifting system with a patented dent rear gear drive. The screen is always visible; it raises and leans flush on the table and can be stopped at any view angle position from 0° to 70° of inclination. A smart memory system makes it easy to set up and recall the desired monitor's position.

Both the monitor housing and the cover plate are made of aluminum and has undergone an anodizing treatment to toughen the aluminum surface to prevent scratches. We have selected the best possible aluminum specifications in the world, to be able to provide the maximum technical and visual performance.

Dynamic1H are available in 17.3" and 21.5", with 2 DVI-HDCP compliant inputs and equipped with an Interactive Setup Display (ISD) allowing the control, setup and diagnose of the monitors. Monitors provide RS-422/ RS-485 Full Duplex allowing the remote control of movements, speed, safety settings, brightness, contrast and backlight levels. The screen is protected with an anti-reflective 2 side coating 3mm black edged glass.

The monitors are equipped with Auto Mechanical Movement Calibration (AH-AMMC). The use of the Arthur Holm's ERT will enable the address configuration of all the monitors installed in a table by simply pressing a button. The monitor is compatible with AHlink Android and iOS app allows access to the setup, diagnose and control menus.

Technical Specifications

Display

Size	FULL HD 17.3" TFT Active Matrix, widescreen. LED backlight
Resolution	1920 (h) x 1080 (v)
Brightness	400 cd/m2
Contrast ratio	600:1
Pixel	0.1989 (h) x 0.1989 (v) mm
Viewing angle	60°/80° (u/d) / 80°/80° (l/r)
Viewing area	381.888 (h) x 214.812 (v) mm
Response time	Tr 37 ms, Tf 3 ms
Temperature (operating/storage)	Operating 0°C ~ +40°C Storage -20°C ~ +60°C

Materials

Monitor housing	Anodized aluminum
Glass	AR 2-side with an anti-reflective coating on the glass surface. Thickness: 3.0 ± 0.3 mm
Cover plate	Anodized aluminum

Connectivity

Input signal	DVI-I (1 input) / DVI-D (1 input) - HDCP Compliant
RJ45 CAT6 (with loop)	Addressable RS-422 /RS-485 Full Duplex monitor control by AHnet protocol
GPI (SubD9)	Up/Down control
USB	For service

Control

RJ45, RS-422/RS-485 Full Duplex (I/O)
Addressing
Termination switch
GPI
IR Remote control (monitor adjustments): 1 / 5
AHlink

Movements Control

User interface on monitor	(Up/Down)
Remote	RS-422 /RS-485 Full Duplex I/O/GPI

Electrical

External power supply	100-240 Vac, 50/60Hz, 12Vdc
Power consumption	50W

Mechanical

Screen	422 x 268 x 28 mm [17.40" x 10.54" x 1.10"]
Cover plate	509 x 389 mm x 3,25 mm [20.03" x 15.31" x 0.98"]
Housing below the table	495 x 371 x 76 mm [19.48" x 14.6" x 2.99"]
Weight	16 Kg / 35.27 Lbs

ARTHUR HOLM

Albiral Display Solutions SL · Fàtima, 25 08512 Sant Hipòlit de Voltregà Barcelona, Spain · +34 938 502 376 · marketing@arthurholm.com · www.arthurholm.com
Arthur Holm is a registered brand of Albiral Display Solutions SL. Specifications subject to change without previous notice.

Make Your Meetings Count!

Options

- Projected capacitive multi-touch screen
- Laser engraved logo
- DynamicTalkM
- Connectors
- DynamicLoop
- DynamicShare

Certifications

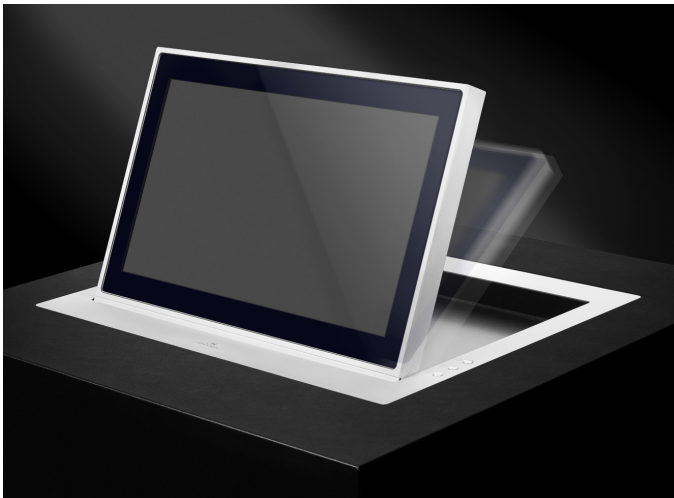
- CE
- FCC
- IECEE

Warranty

- 2 years general warranty

Finishes

- Painted
- Black anodized
- Gold finish
- Bronze finish

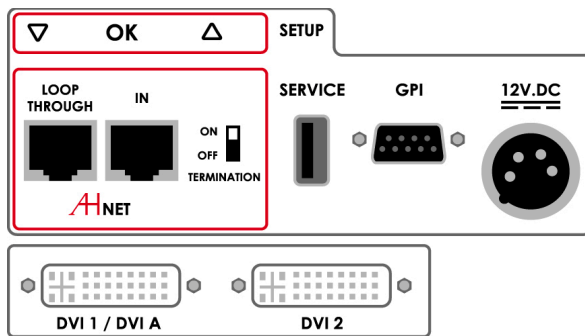


ARTHUR HOLM

Albiral Display Solutions SL · Fàtima, 25 08512 Sant Hipòlit de Voltregà Barcelona, Spain · +34 938 502 376 · marketing@arthurholm.com · www.arthurholm.com

Arthur Holm is a registered brand of Albiral Display Solutions SL. Specifications subject to change without previous notice.

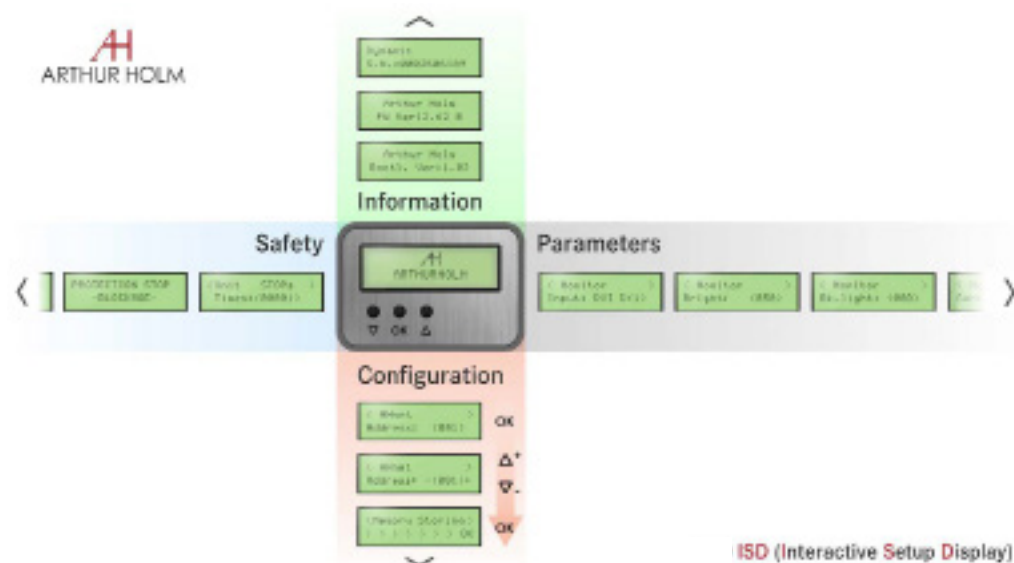
Make Your Meetings Count!



Connectivity

- 1- AHnet control interface
- 2- USB for Service
- 3- GPI control
- 4- Power input
- 5- DVI 1 / DVI A video input
- 6- DVI 2 video input

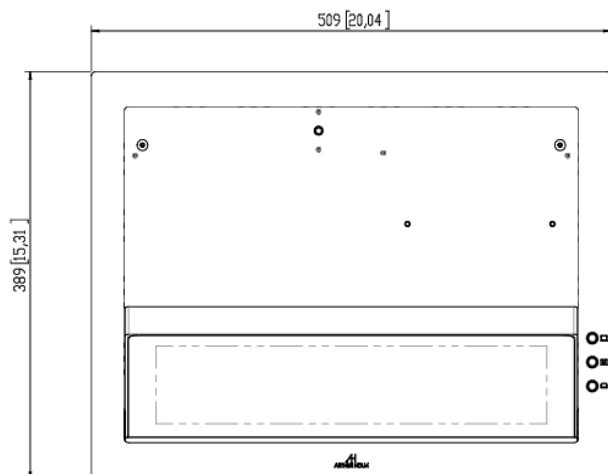
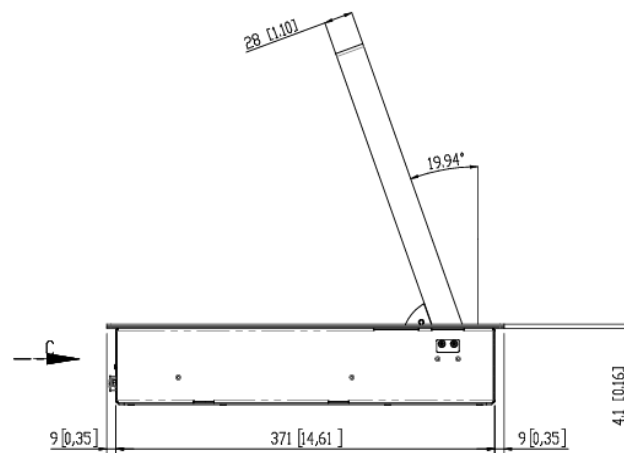
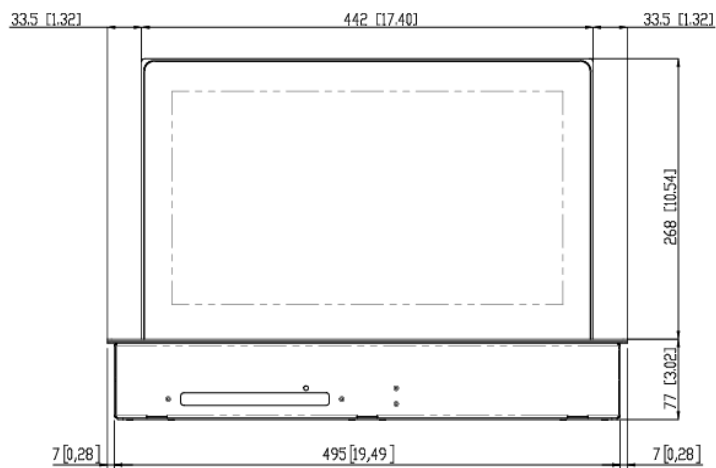
Interactive Setup Display (ISD)



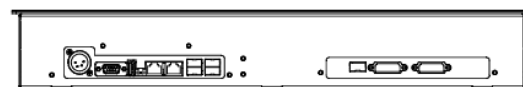
Consultants, architects and engineers specifications

Horizontally foldable motorized 17.3" Full HD professional monitor. The screen of the monitor shall be always visible and shall raise and lean flush on the table. The movement shall be stopped at any view angle position from 0° to 70° of inclination. The monitor shall make the movements thanks to a rear gear dent system. The monitor shall have a memory function to set up and recall the desired monitor's position. The monitor housing shall be made of milled aluminum, the cover plate shall be made of anodized aluminum and the screen shall be protected with anti-reflective 2 side coating black edged 3 mm glass. The monitor shall have a brightness of 400 cd/m2 and a contrast ratio of 600:1. The monitor shall provide 2 DVI - HDCP Compliant inputs by a licensed HDCP monitor manufacturer.

The monitor shall provide an addressable RS-422 / RS-485 Full Duplex and an easy-to-read interactive setup display (ISD) for the setup, diagnose and control, and shall be compatible with ERT-30 and ERT 60. The use of the Arthur Holm's ERT will enable the address configuration of all the units installed in a table by simply pressing a button. The monitor shall be able to run an auto-adjustment program to reset the factory security ratio between its factory movement speed and its protection parameters adapting the unit to the way it has been installed. The monitor shall provide a USB port for firmware upgrades. The monitor shall be compatible with the AHlink wireless Android and iOS App for the setup, diagnosis and control.



VIEW C



ARTHUR HOLM

Albiral Display Solutions SL · Fàtima, 25 08512 Sant Hipòlit de Voltregà Barcelona, Spain · +34 938 502 376 · marketing@arthurholm.com · www.arthurholm.com
 Arthur Holm is a registered brand of Albiral Display Solutions SL. Specifications subject to change without previous notice.

Make Your Meetings Count!