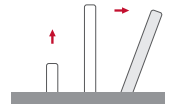


DB2Share

HDCP compliant retractable motorized monitor with DynamicShare



Dynamic DB2 (577FW202)

Serial: 0000000000

Ver: 1.37

Control

MOV UP DOWN

DISP ON OFF

DVIA DVI1 DVI2

BACKL 99

CONTR 62

BRIGHT 59

SAVE VALUES AHLINK OFF

Command: FA:01:00:00

S1 S2 S3 S4

AHnet Address 1

Position 0

PASSWORD: 0

Highlights

- Vertical motorized retractable HDCP compliant monitor with up to 20° inclination with input selection and input distribution
- Streamlined retractable HDMI cable
- Adjustable tilt angle
- No cover plate required (monitor completely streamlined within the furniture)
- One capacitive button on the screen glass to adjust the tilt angle and lower the screen
- Share control buttons located on the screen's glass
- Can be veneered
- Interactive Setup Display (ISD)
- Compatible wireless connectivity for setup and control via AHlink
- Auto Mechanical Movement Calibration (AH-AMMC)

AHlink : the App for setup, control and diagnose



ARTHUR HOLM

Albiral Display Solutions SL · Fàtima, 25 · 08512 Sant Hipòlit de Voltregà · Barcelona, Spain · +34 938 502 376 · marketing@arthurholm.com · www.arthurholm.com
Arthur Holm is a registered brand of Albiral Display Solutions SL. Specifications subject to change without previous notice.

Make Your Meetings Count!

General

Arthur Holm's DB2Share is a motorized retractable communication solution that creates minimal impact on the furniture's design, which provides full control to select and distribute different video inputs through the capacitive touch buttons located on the screen's glass. This solution is provided with a motorized retractable HDMI cable that rises as an extension of the slick design of the monitor. With a maximum thickness of 20 mm, this monitor range is elegant, beautiful from all angles and can be veneered for a seamless integration in the furniture, creating a long-lasting user's experience and delivering an exceptional image quality.

The screen is protected with an anti-reflective 2-side coating 2mm black edged glass. By touching directly on the monitor, users can select the HDMI input and share it. DB2Share are available in 17.3" and 21.5".

Monitors are equipped with 2 HDMI-HDCP compliant inputs and 1 output at the bottom of the unit, allowing the daisy chain of a maximum of 20 devices. An Interactive Setup Display (ISD) allowing the control, setup and diagnose of the monitors. Monitors provide RS-422/RS-485 Full Duplex allowing the remote control of movements, speed, safety settings, brightness, contrast and backlight levels.

The monitors are equipped with Auto Mechanical Movement Calibration (AH-AMMC). The use of the Arthur Holm's ERT-30 and ERT-60 will enable the address configuration of all the monitors installed in a table by simply pressing a button. The monitors are compatible with AHlink Android and iOS app allows access to the setup, diagnose and monitor's control.

Technical Specifications

Display

Size	FULL HD 21.5" TFT Active Matrix, widescreen format. LED backlight
Resolution	1920 (h) x 1080 (v)
Brightness	350 cd/m2
Contrast ratio	1000:1
Pixel	0.24975 (h) x 0.24975 (v) mm
Viewing angle	89° / 89° (u/d) 89° / 89° (l/r)
Viewing area	476.064 (h) x 267.786 (v) mm
Response time	Tr 12ms, Tf 10ms
Temperature (operating/storage)	Operating 0°C ~ +40°C Storage -20°C ~ +60°C

Materials

Monitor housing	Solid mechanized aluminum housing with anodized finish. Front black serigraphed glass.
-----------------	--

Connectivity

Input signal	1x HDMI retractable cable input 2x HDMI input below the monitor HDMI loop IN/OUT - HDCP compliant
RJ45 CAT6 (with loop)	Addressable RS-422/RS-485 monitor control by AHnet protocol
GPI (SubD9)	Up/Down control
USB	For service

Control

RJ45, RS-422/RS-485 Full Duplex (I/O), AHNet protocol
Addressing
Termination switch
IR Remote control (monitor adjustments): 1 Remote control is provided every 5 motorized devices

Movement's Control

User interface on monitor	(Up/Down) Capacitive touch sensor
Remote	RS-422/RS-485 Full Duplex, GPI

Electrical

External power supply	100-240 Vac, 50/60Hz, 12Vdc
Power consumption	70W

Accessories

ERT	Ethernet Interface Unit
-----	-------------------------

Mechanical

Screen	518 x 310 x 20mm [20.39" x 12.23" x 0.79"]
Top frame	518 x 20mm [20.39" x 0.79"]
Housing below the table	671 x 80 x 607mm [26.42" x 3.15" x 23.9"]
Weight	27 Kg / 59.5 Lbs

ARTHUR HOLM

Albiral Display Solutions SL · Fàtima, 25 · 08512 Sant Hipòlit de Voltregà · Barcelona, Spain · +34 938 502 376 · marketing@arthurholm.com · www.arthurholm.com
Arthur Holm is a registered brand of Albiral Display Solutions SL. Specifications subject to change without previous notice.

Make Your Meetings Count!

Options and accessories

- Projected capacitive multi-touch screen
- Priority button
- External box to allow the connection of third party monitors, projectors or video wall systems in a DynamicShare configuration. 3/HDMI Inputs, 1/HDMI Output, dedicated ports for Loop In and Loop Out, HDCP compliant, Ethernet external control, Digital audio Output.
- Kit of transmitter and receiver to extend the HDMI connection above 5 meters

Finishes

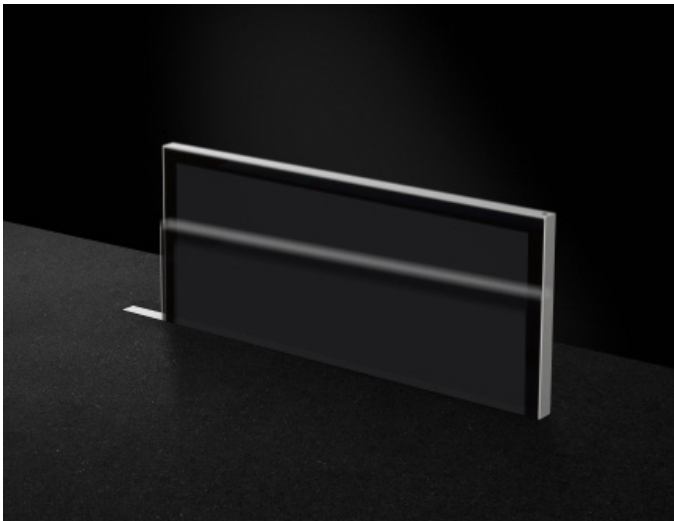
- Tabletop frame
- Black anodized
- Gold
- Bronze
- Painted

Certifications

- CE
- FCC
- IECEE
- CB
- RoHs
- BIS

Warranty

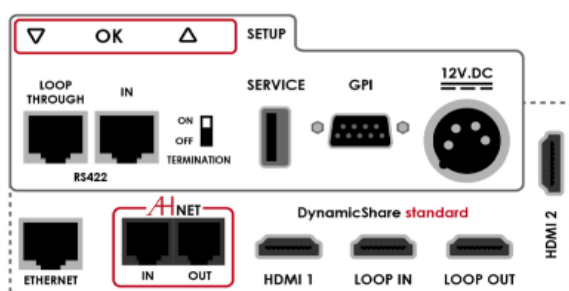
- 5 years for the mechanical parts



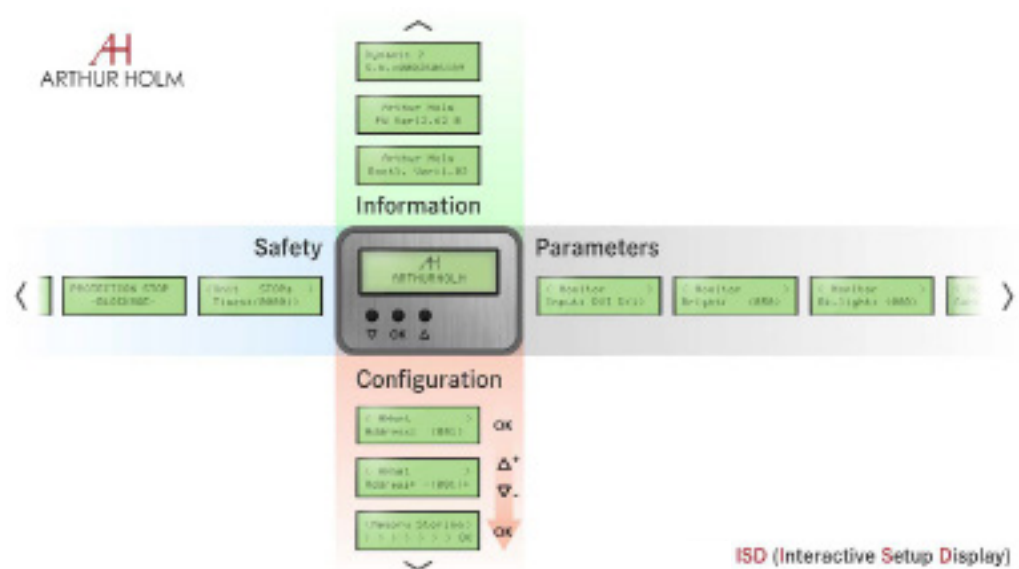
ARTHUR HOLM

Albiral Display Solutions SL · Fàtima, 25 · 08512 Sant Hipòlit de Voltregà · Barcelona, Spain · +34 938 502 376 · marketing@arthurholm.com · www.arthurholm.com
Arthur Holm is a registered brand of Albiral Display Solutions SL. Specifications subject to change without previous notice.

Make Your Meetings Count!



Interactive Setup Display (ISD)



Consultants, architects and engineers specifications

Vertically retractable motorized 21.5" Full HD professional monitor that requires a minimal opening on the table surface including 3 HDMI inputs by a licensed HDCP manufacturer, one of them being the retractable cable, an input selection and a straightforward sharing system.

The monitor housing shall be made of milled anodized aluminum with a maximum thickness of 20 mm. and the screen shall be protected with an anti-reflecting 2 side coating 2mm glass. A retractable HDMI cable shall raise as an extension of the monitor and shall retract inside the table.

The top of the monitor housing shall be flush with the table when in recessed position. A capacitive button placed on top of the monitor housing shall activate the monitor's up and down movements and the inclination angle to a maximum of 20°.

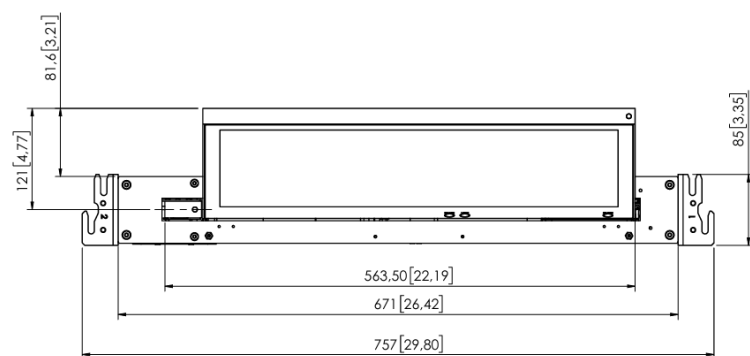
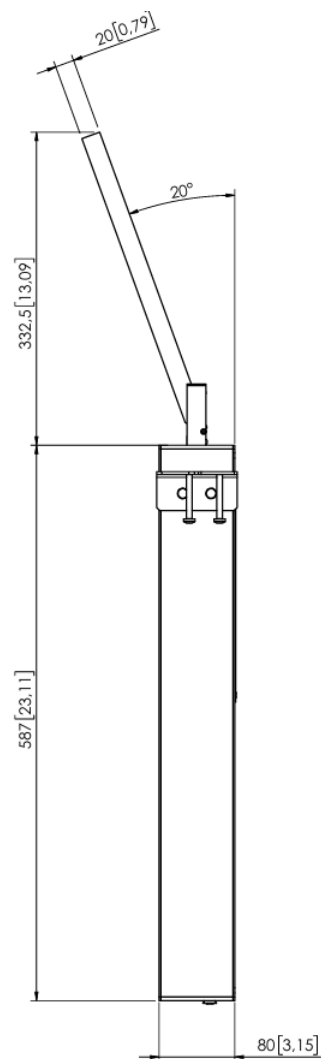
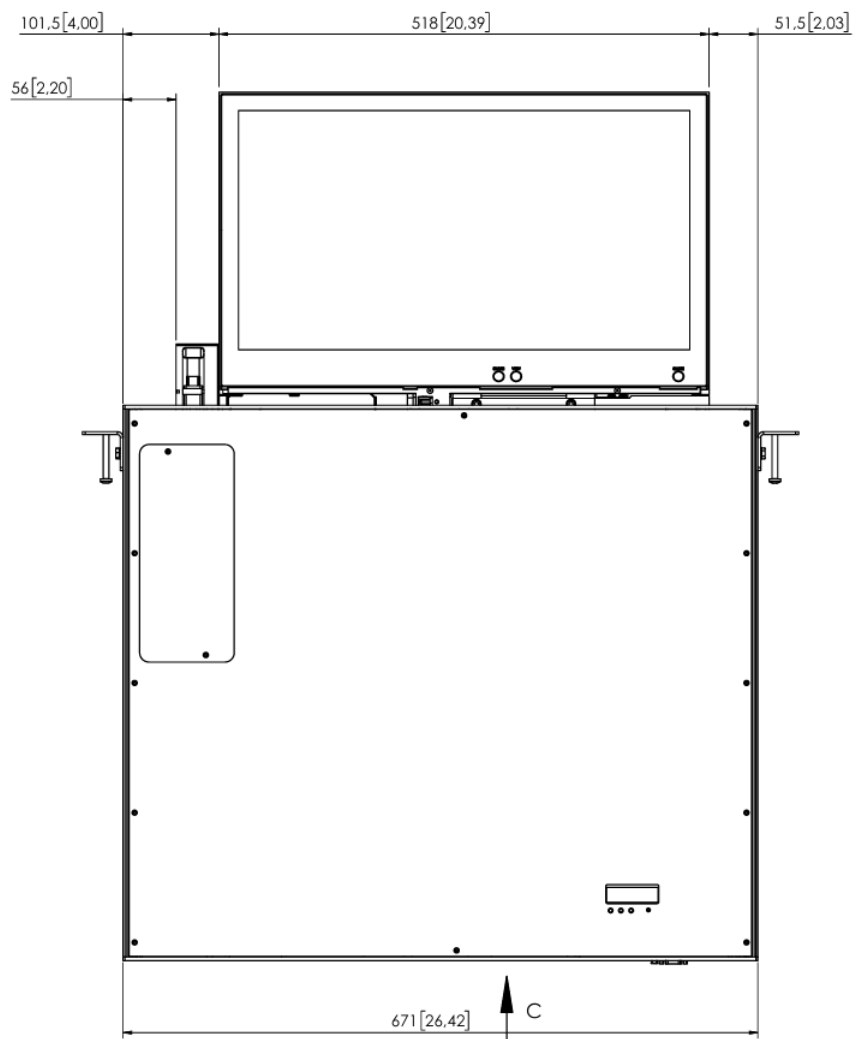
The system shall allow to daisy chain up to 20 monitors by using HDMI cables and shall allow the user full control to select and distribute HDMI inputs by touching capacitive buttons integrated on the glass of the screen, below the viewing area. The monitor shall have a brightness of 350 cd/m2, and a contrast ratio of 1000:1.

The monitor shall provide RS-422/RS-485 Full Duplex for the AHnet protocol and an Easy-to-Read Interactive Setup Display (ISD) for the setup, diagnose and control, and shall be compatible with ERT-30 and ERT-60. The monitor shall be compatible with the AHlink wireless Android and iOS App for the setup, diagnose and control.

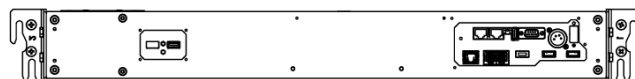
ARTHUR HOLM

Albiral Display Solutions SL · Fàtima, 25 · 08512 Sant Hipòlit de Voltregà · Barcelona, Spain · +34 938 502 376 · marketing@arthurholm.com · www.arthurholm.com
Arthur Holm is a registered brand of Albiral Display Solutions SL. Specifications subject to change without previous notice.

Make Your Meetings Count!



VIEW C



ARTHUR HOLM

Albiral Display Solutions SL · Fàtima, 25 · 08512 Sant Hipòlit de Voltregà · Barcelona, Spain · +34 938 502 376 · marketing@arthurholm.com · www.arthurholm.com
 Arthur Holm is a registered brand of Albiral Display Solutions SL. Specifications subject to change without previous notice.

Make Your Meetings Count!