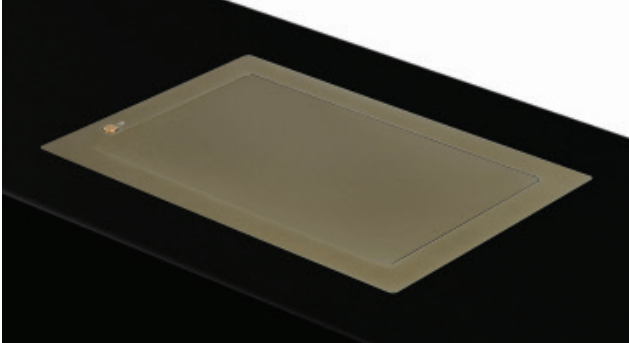


## CourtesyBox

Motorized housing for tissues



### Highlights

- Motorized housing for tissues
- Can be veneered
- Maintenance free
- Personalized finish
- Control buttons on cover plate
- Easy installation
- Compact, space-optimizing and elegant solution
- Silent, reliable and durable solution
- Serial control and remote diagnosis
- Compatible wireless connectivity for setup and control via AHlink

### General

The CourtesyBox is a motorized solution to hide anything in the tables, keeping the surface clean. The CourtesyBox can be controlled locally or remotely through RS-422/RS-485 Full Duplex and the open/close button can be disabled or locked. The CourtesyBox can also be daisy chained with all the rest of Arthur Holm motorized products using CAT6 cables for control. The Courtesy Box is designed to be installed on horizontal surfaces of furniture. When the hatch is closed, it leaves the desk free of any obtrusive elements.

The CourtesyBox shall be compatible with the AHlink wireless Andraoid and iOs App for the setup, diagnosis and control, making its installation and service easy and straightforward.

## Materials

Housing	Brushed stainless steel
---------	-------------------------

## Connectivity

RJ45 CAT6 (with loop)	Addressable RS-422/RS-485 Full Duplex control by AHnet protocol
-----------------------	---

## Engine

Control Up/Down	Buttons on cover plate, RS-422/RS-485 Full Duplex (RJ45 CAT6)
-----------------	---

Electronic control	PWM
--------------------	-----

Ethernet AHnet commands	
-------------------------	--

## Electrical

External power supply	100-240Vac, 50/60Hz, 12Vdc
-----------------------	----------------------------

Power consumption	10W
-------------------	-----

## Mechanical

Cover plate	292 x 200 x 3mm [11.50" x 7.87" x 0.11"]
-------------	---

Housing below the table	277 x 184 x 258mm [10.90" x 7.23" x 10.17"]
-------------------------	--

Weight	5.3kg / 11.68lbs
--------	------------------

## Certifications

- CE
- FCC

## Warranty

- 2 years general warranty

## Options

- Painted
- Black anodized
- Gold finish
- Bronze finish

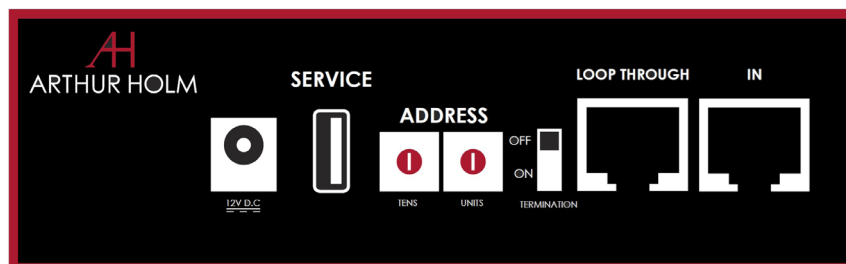
## Consultants, architects and engineers specifications

The motorized CourtesyBox shall be made of stainless steel. The box shall be designed to hide tissues, and the hatch shall slide down within the furniture.

The unit shall be controlled locally or remotely through RS-422/RS-485 Full Duplex and the open/close button shall be capable to be disabled or locked.

The use of Arthur Holm's ERT will enable the address configuration of all the monitors installed in a table by simply pressing a button. The monitor is compatible with AHlink Android and iOS App which allows access to the setup, diagnose and control menus.

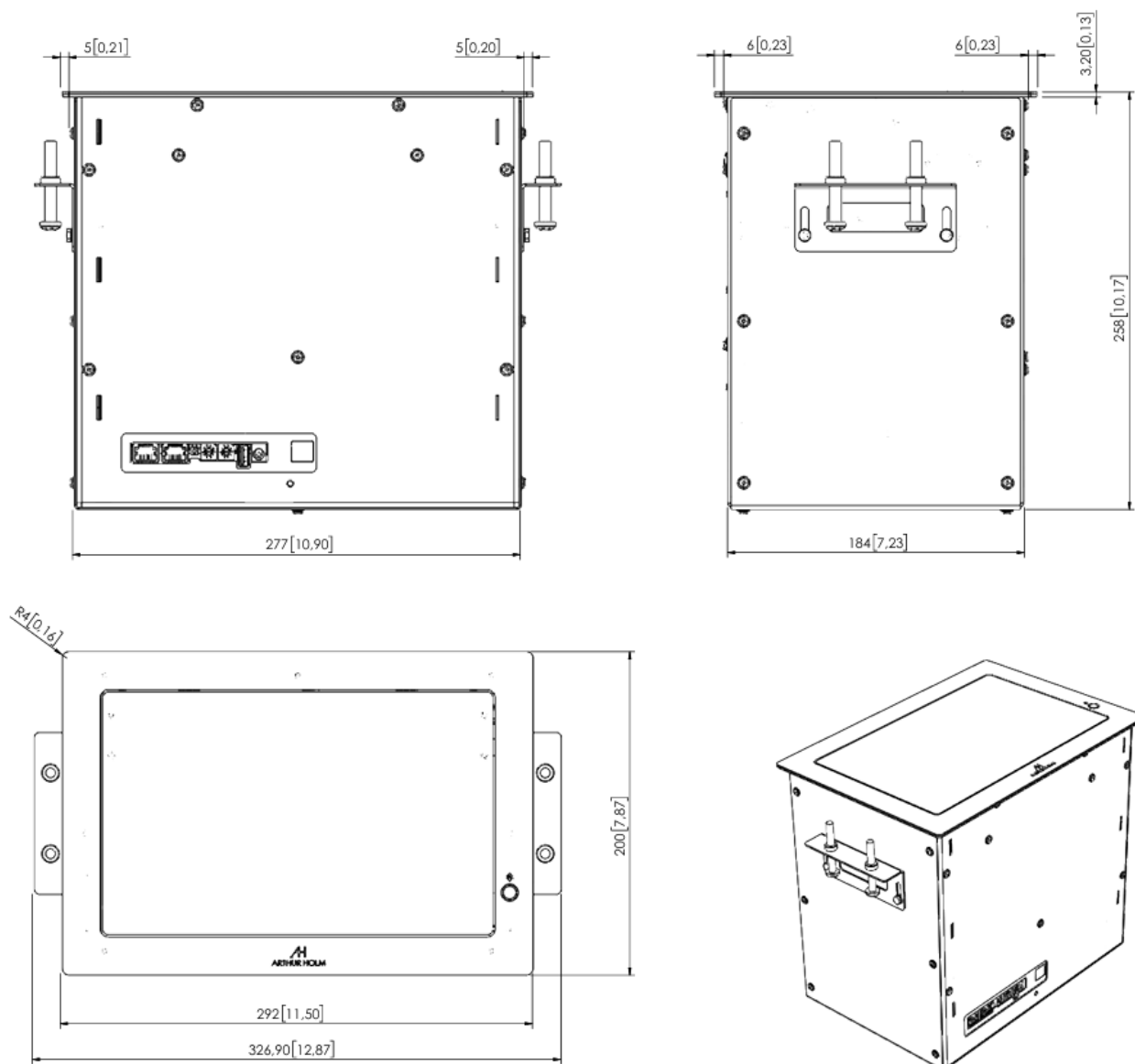
## Connectivity Panel



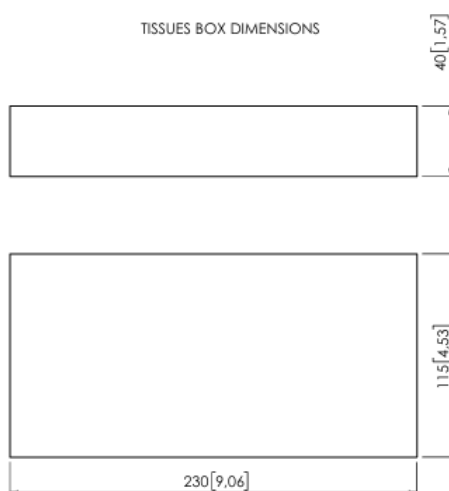
## ARTHUR HOLM

Albiral Display Solutions SL · Fàtima, 25 · 08512 Sant Hipòlit de Voltregà · Barcelona, Spain · +34 938 502 376 · marketing@arthurholm.com · www.arthurholm.com  
Arthur Holm is a registered brand of Albiral Display Solutions SL. Specifications subject to change without previous notice.

Make Your Meetings Count!



TISSUES BOX DIMENSIONS



## ARTHUR HOLM

Albiral Display Solutions SL · Fàtima, 25 · 08512 Sant Hipòlit de Voltregà · Barcelona, Spain · +34 938 502 376 · marketing@arthurholm.com · www.arthurholm.com  
 Arthur Holm is a registered brand of Albiral Display Solutions SL. Specifications subject to change without previous notice.

Make Your Meetings Count!