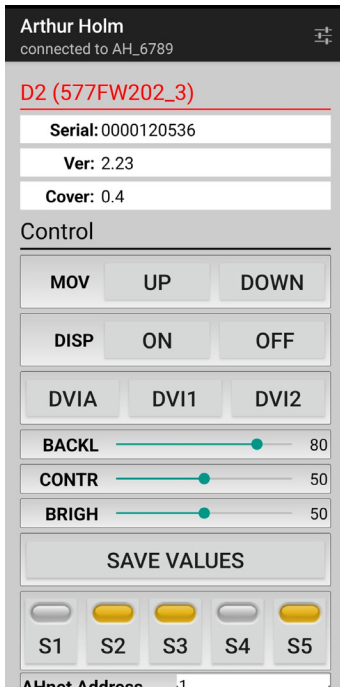
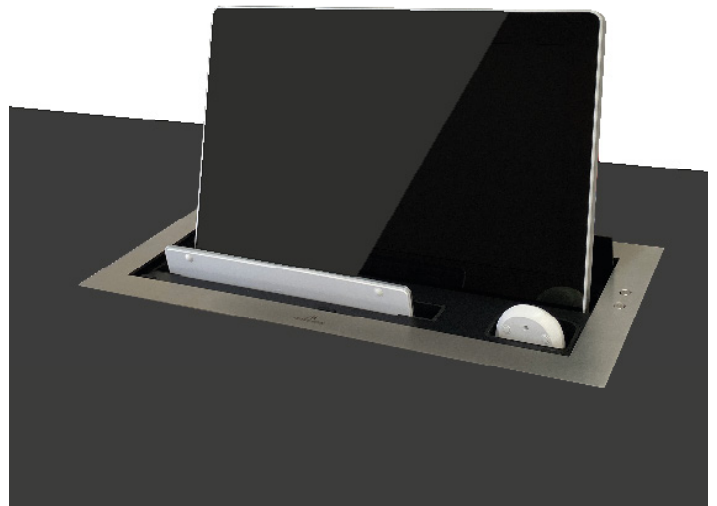
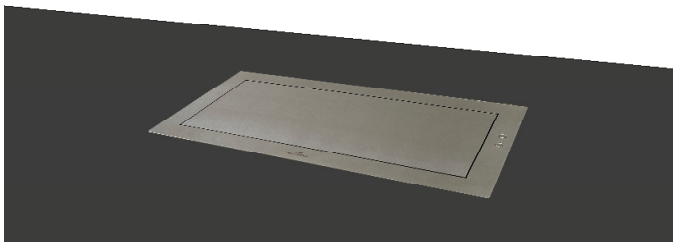
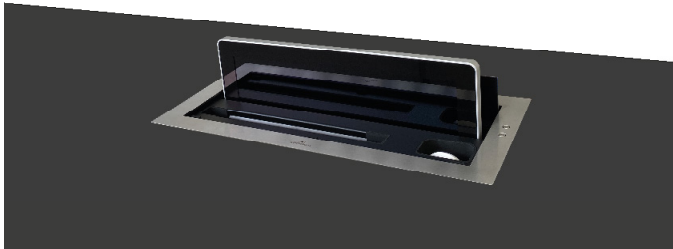
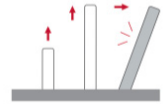




ARTHUR HOLM DynamicX2KM

HDCP compliant aluminum retractable motorized monitor with an automated compartment for keyboard and mouse

AH17DX2KM



Highlights

- Vertical motorized HDCP compliant monitor with 20° of inclination
- Synchronized lift system to raise and retract a keyboard and mouse compartment
- Patented single engine mechanism for up/down and tilt movements
- Milled aluminum housing
- Front anti-reflective 2-side coated 3mm black edged glass
- Stainless steel customizable cover plate
- Maintenance free
- Energy saving design, low consumption video controller
- Interactive Setup Display (ISD)
- Auto mechanical Movement Calibration (AH-AMMC)
- Compatible wireless connectivity for setup and control via AHlink



ARTHUR HOLM

Albiral Display Solutions SL · Fàtima, 25 · 08512 Sant Hipòlit de Voltregà · Barcelona, Spain · +34 938 502 376 · marketing@arthurholm.com · www.arthurholm.com
Arthur Holm is a registered brand of Albiral Display Solutions SL. Specifications subject to change without previous notice.

Make Your Meetings Count!

General

Arthur Holm DynamicX2KM is a motorized retractable monitor with an integrated lifting system for storing a wired or wireless keyboard and mouse. It is an HDCP compliant aluminum retractable monitor with a synchronized motorized keyboard and mouse compartment ideal for optimizing space in workstations. The monitor, keyboard and mouse are concealed underneath a stainless steel cover plate that opens and slides down inside the furniture, allowing the monitor to rise and tilt 20° to ensure the best ergonomics, viewing angle and visibility. The movement is based on a patented mechanical system. The keyboard and mouse are raised simultaneously with the monitor to a position where the user can easily access them. After the use, the keyboard and mouse can be placed back in this compartment where they disappear under the stainless steel cover plate together with the monitor, leaving the desk neat and free of any obtrusive device.

The monitor has slightly curved edges for a contemporary and longstanding look and the screen is protected with an anti-reflective 2 side coating 3 mm black edged glass. DynamicX2KM are equipped with 2 DVI HDCP compliant inputs and equipped with an Interactive Setup Display allowing the control, setup and diagnose of the monitors. Monitors provide RS-422/RS-485 Full Duplex I/O allowing the remote control of movements, speed, safety settings, brightness, contrast and backlight.

The monitors are equipped with an Auto Mechanical Calibration Movement System (AH-AMMC). The use of the Arthur Holm's ERT will enable the address configuration of all the monitors installed in a table by simply pressing a button.

Technical Specifications

Display

| | |
|---------------------------------|---|
| Size | FULL HD 17.3" TFT Active Matrix, widescreen format. LED backlight |
| Resolution | 1920 (h) x 1080 (v) |
| Brightness | 400 cd/m2 |
| Contrast ratio | 600:1 |
| Pixel | 0.1989 (h) x 0.1989 (v) mm |
| Viewing angle | 60°/80° (u/d) 80°/80° (l/r) |
| Viewing area | 381.888 (h) x 214.812 (v) mm |
| Response time | Tr 37 ms, Tf 3 ms |
| Temperature (operating/storage) | Operating 0°C ~+40°C Storage -20°C ~+60°C |

Materials

| | |
|-----------------|--|
| Monitor housing | Anodized Aluminum |
| Glass | AR 2-side with an anti-reflective coating on the glass surface. Thickness: 3.0 ± 0.3 mm |
| Cover plate | Stainless steel |

Connectivity

| | |
|-----------------------|---|
| Input signal | DVI-I (1 input) Digital / Analog DVI-D (1 input) Digital - HDCP Compliant |
| RJ45 CAT6 (with loop) | Addressable RS-422/RS-485 Full Duplex monitor control by AHnet protocol |
| GPI (SubD9) | Up/Down control (opto isolated) |
| USB | For service |

Accessories

| | |
|-----|-------------------------|
| ERT | Ethernet Interface Unit |
|-----|-------------------------|

Control

| |
|---|
| RJ45, RS-422/RS-485 Full Duplex (I/O), AHNet protocol |
| Addressing |
| Termination switch |
| GPI |
| IR Remote control (monitor adjustments): 1 Remote control is provided every 5 motorized devices |

Movement's Control

| | |
|---------------------------|----------------------------------|
| User interface on monitor | (Up/Down) Buttons on cover plate |
| Remote | RS-422/RS-485 Full Duplex, GPI |

Electrical

| | |
|-----------------------|-----------------------------|
| External power supply | 100-240 Vac, 50/60Hz, 12Vdc |
| Power consumption | 50W |

Mechanical

| | |
|-------------------------|--|
| Screen | 443 x 256.8 x 25 mm [17.44" x 10.11" x 0.98"] |
| Top frame | 539 x 262.5 x 3 mm [21.21" x 10.33" x 0.12"] |
| Housing below the table | 525 x 598 x 80 mm [20.67" x 23.52" x 3.15"] |
| Weight | 17.9 Kg / 39.4 Lbs |

Options and accessories

- 2/ HDMI Inputs
- DynamicLoop
- DynamicShare
- Built-in USB or HD-SDI camera
- DynamicTalk
- Projected capacitive multi-touch screen
- Connectors on the cover plate
- Undercover for veneer

Finishes

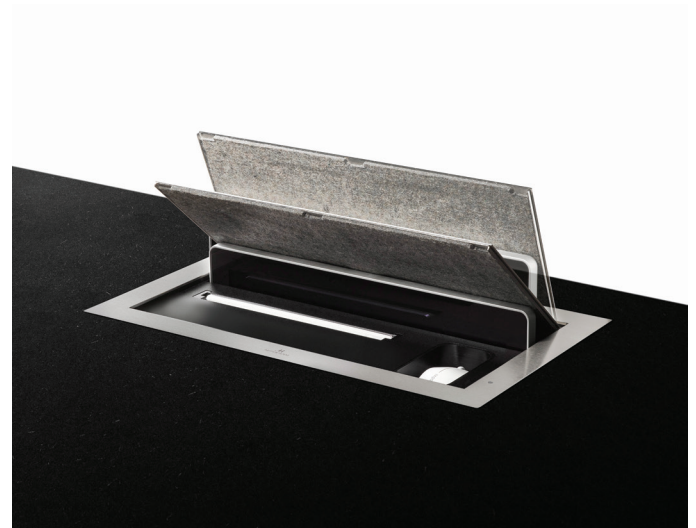
- Painted
- Black anodized
- Gold
- Bronze
- Laser engraved logo
- Matte cover plate

Certifications

- CE
- IECEE
- CB
- RoHs
- BIS

Warranty

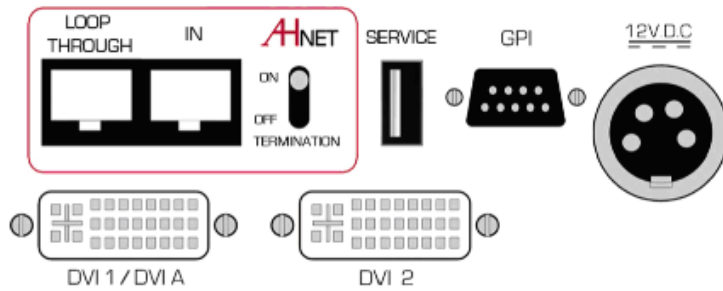
- 5 years for the mechanical parts



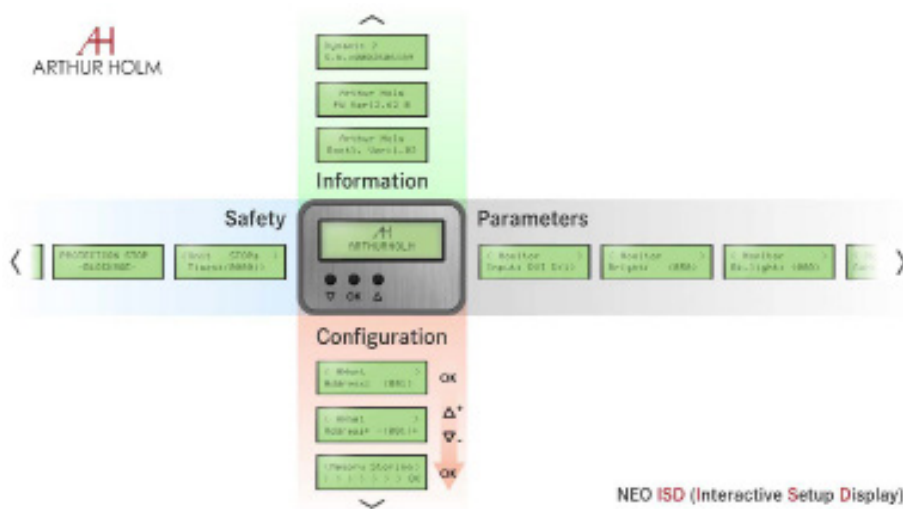
ARTHUR HOLM

Albiral Display Solutions SL · Fàtima, 25 · 08512 Sant Hipòlit de Voltregà · Barcelona, Spain · +34 938 502 376 · marketing@arthurholm.com · www.arthurholm.com
Arthur Holm is a registered brand of Albiral Display Solutions SL. Specifications subject to change without previous notice.

Make Your Meetings Count!



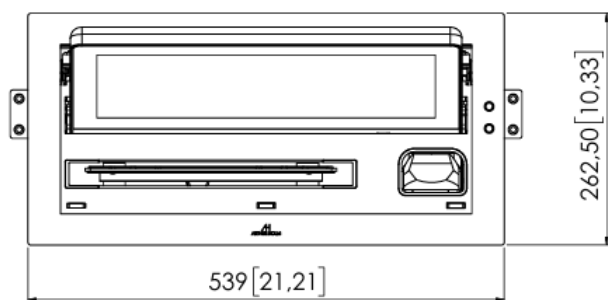
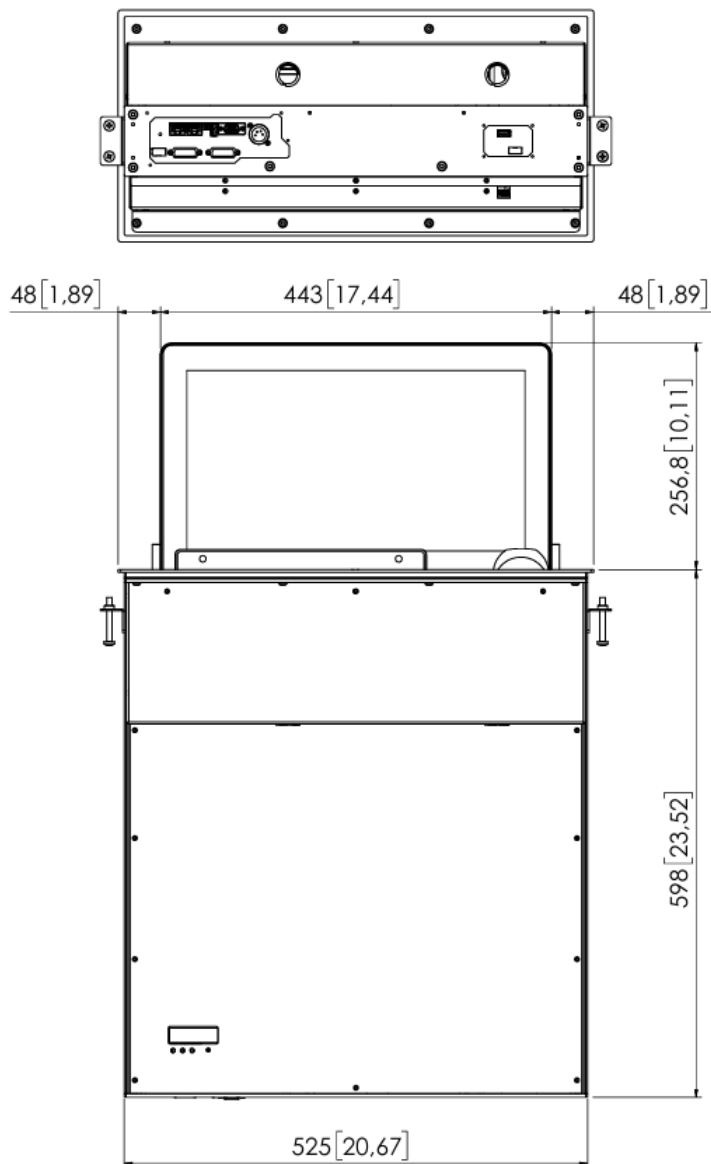
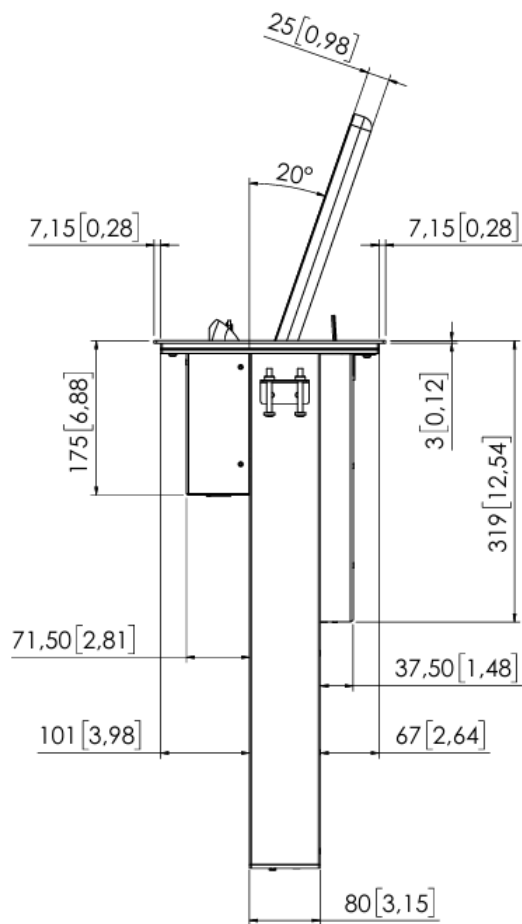
Interactive Setup Display (ISD)



Consultants, architects and engineers specifications

Vertically retractable motorized 17.3” Full HD professional monitor that includes a lifting and retracting mechanism to allow the lifting and storage of a wired or wireless keyboard and mouse. The cover plate shall be made of stainless steel and shall be actively activated by 2 push buttons or remotely. The cover plate shall slide down inside the furniture. The monitor housing shall be made of milled anodized aluminum and the screen shall be protected with an anti-reflecting 2 side coated 3mm glass. The monitor shall make the up/down/tilt movements with only one engine. The monitor cover plate shall provide a passive opening system and shall be made of 3mm brushed stainless steel. The monitor shall have a brightness of 400cd/m2, and a contrast ratio of 600:1.

The monitor shall provide 2 DVI HDCP inputs by a licensed HDCP manufacturer. The monitor shall provide RS-422/RS-485 Full Duplex for the AHnet protocol and an Easy-to-Read Interactive Setup Display (ISD) for the setup, diagnose and control, and shall be compatible with ERT-30 and ERT-60. The monitor shall be able to run an auto-adjustment program to reset the factory security ratio between its factory movement speed and its protection parameters adapting the unit to the way it has been installed. The monitor shall provide a USB port for firmware upgrades. The monitor shall be compatible with the AHlink wireless Android and iOS App for the setup, diagnose and control.

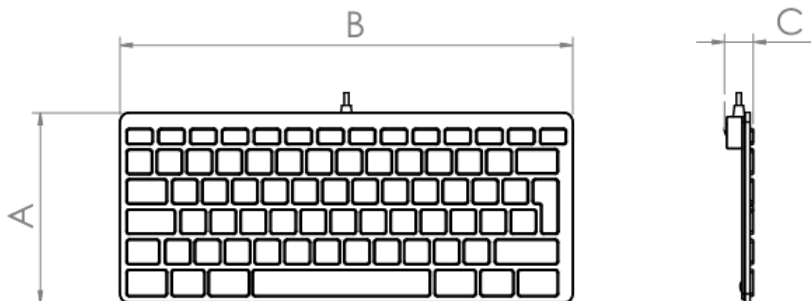


ARTHUR HOLM

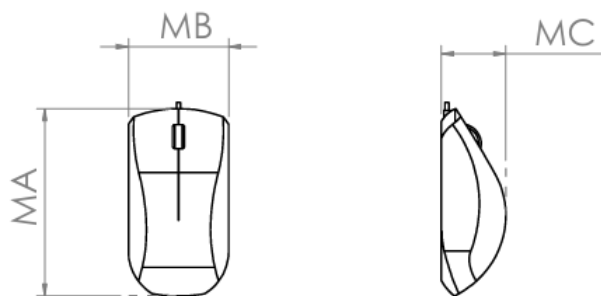
Albiral Display Solutions SL · Fàtima, 25 · 08512 Sant Hipòlit de Voltregà · Barcelona, Spain · +34 938 502 376 · marketing@arthurholm.com · www.arthurholm.com
 Arthur Holm is a registered brand of Albiral Display Solutions SL. Specifications subject to change without previous notice.

Make Your Meetings Count!

DynamicX2KM is designed to be equipped with standard Arthur Holm Keyboard/Mouse. If another Keyboard/Mouse is required, this should comply with the specifications below. If so, can be adapted for the chosen Keyboard/Mouse,



| Keyboard dimension. | | | |
|---------------------|----------------------------------|------------------------------------|--------------------------------|
| Model | "A" Dimension | "B" Dimension | "C" Dimension |
| DX2KM FHD 17" | From 120 [4,72] to 135 [5,32] | From 270 [10,63] to 320 [12,59] | From 10 [0,39] to 25 [0,98] |



| Mouse dimension. | | | |
|------------------|----------------------------------|--------------------------------|--------------------------------|
| Model | "MA" Dimension | "MB" Dimension | "MC" Dimension |
| DX2KM FHD 17" | From 105 [4,13] to 120 [4,72] | From 58 [2,28] to 65 [2,56] | From 17 [0,67] to 42 [1,65] |