

Dynamic3Reverse

HDCP compliant aluminum foldable and rotatable motorized monitor



Dynamic3Rev(577FW203)

Serial: 0000000000

Ver: 1.19

Control

OPEN MEM CLOS E CLOS E_FU

DISP ON OFF

DVIA DVI1 DVI2

BACKL 80

CONTR 50

BRIGH 50

SAVE VALUES AHLINK OFF

Command: 00:00:00:00:00

SAVE VALUES AHLINK OFF

Command: 00:00:00:00:00

S1 S2 S3 S4

AHnet Address 1

Position 10

PASSWORD: 0

AHlink : the App for setup, control and diagnose



Highlights

- Opens, folds down and rotates 180°
- Adjustable and memorizable tilt angle from 0° to 90°
- Entirely built of aluminum
- 2 DVI I/HDCP compliant
- Front anti-reflective 2-side coating 3mm black edged glass
- Low profile monitor enclosure
- Floating security sensor
- Maintenance free
- Interactive Setup Display (ISD)
- Energy saving design, low consumption video controller
- Serial control and remote diagnosis
- Compatible wireless connectivity for setup and control via AHlink
- Auto Mechanical Movement Calibration (AH-AMMC)

ARTHUR HOLM

Albiral Display Solutions SL · 08512 Fàtima, 25 Sant Hipòlit de Voltregà · Barcelona, Spain · +34 938 502 376 · marketing@arthurholm.com · www.arthurholm.com
Arthur Holm is a registered brand of Albiral Display Solutions SL. Specifications subject to change without previous notice.

Make Your Meetings Count!

General

Arthur Holm Dynamic3Reverse is a motorized foldable and rotatable monitor that provides horizontal and vertical adjustable working positions while keeping a low profile inside the working desk for a perfect integration in the furniture. The monitor shall be stopped at any point from 0° to 90° and shall provide a memory system. The monitor shall rotate 180° to be closed with the screen facing down. The rotation axis shall be in the area that is closer to the user.

The screen is protected with an anti-reflective 2 side coating 3 mm black edged glass. The monitor has a dual safety system that detects obstructions causing the unit to stop through a floating security sensor.

Dynamic3Reverse is available in 18.5", with 2 DVI-HDCP compliant inputs and equipped with an interactive setup display (ISD) allowing the control, setup and diagnose of the monitors. Monitors provide RS-422/RS-485 Full Duplex I/O allowing the remote control of movements, speeds, safety settings, brightness, contrast and backlight.

The monitors are equipped with Auto Mechanical Movement Calibration (AH-AMMC). The use of the Arthur Holm's ERT will enable the address configuration of all the monitors installed in a table by simply pressing a button. The monitor is compatible with AHlink Android and iOS app allows access to the setup, diagnose and control menus.

Technical Specifications

Display

| | |
|------------------------|--|
| Size | Full HD 18.5" TFT Active Matrix. LED backlight |
| Resolution | 1920 (h) x 1080 (v) |
| Brightness | 400 cd/m2 |
| Contrast ratio | 1500:1 |
| Pixel | 0.213 (h) x 0.213 (v) mm |
| Viewing angle | 85°/85° (u/d) 85°/85° (l/r) |
| Viewing area | 408.96 (h) x 230.04 (v) mm |
| LED backlight lifespan | 50,000 hrs |
| Response time | Tr + Tf = 35 ms |
| Temperature | Operating 0°C – +40°C Storage -20°C – +60°C |

Materials

| | |
|-----------------|---|
| Monitor housing | Anodized Aluminum |
| Glass | AR 2 side with an anti-reflective coating on the glass surface. Thickness: 3.0 ± 0.3 mm |
| Cover plate | Anonized aluminum |

Connectivity

| | |
|-----------------------|---|
| Input signal | DVI-I (1 input) – HDCP Compliant DVI-D (1 input) – HDCP Compliant |
| RJ45 CAT6 (with loop) | Addressable RS-422/RS-485 Full Duplex monitor control by AHnet protocol |
| GPI (SubD9) | Movements Control |
| USB | For service |

Control

| |
|---|
| RJ45, RS-422/RS-485 Full Duplex monitor control by AHnet protocol |
| Addressing |
| Termination switch |
| GPI |
| IR Remote control (monitor adjustments): 1 Remote control is provided every 5 motorized devices |

Movements Control

| | |
|---------------------------|------------------------------------|
| User interface on monitor | (Up/Down/Rotation) |
| Remote | RS-422/RS-485 Full Duplex I/O/ GPI |

Electrical

| | |
|-------------------|---------------------------|
| Low voltage | 100-240Vac 50/60Hz, 12Vdc |
| Power consumption | 55W |

Mechanical

| | |
|-------------------------|--|
| Screen | 471 x 315.25 x 33mm [18.54" x 12.41" x 1.30"] |
| Cover plate | 542 x 434.5 x 4.1mm [21.34" x 17.1" x 0.16"] |
| Housing below the table | 520 x 413.70 x 102.5 mm [20.47" x 16.29" x 4.03"] |
| Weight | 18 Kg / 39.6 Lbs |

ARTHUR HOLM

Albiral Display Solutions SL · Fàtima, 25 · 08512 Sant Hipòlit de Voltregà · Barcelona, Spain · +34 938 502 376 · marketing@arthurholm.com · www.arthurholm.com
Arthur Holm is a registered brand of Albiral Display Solutions SL. Specifications subject to change without previous notice.

Make Your Meetings Count!

Options

- Projected capacitive multi-touch screen
- Built-in DynamicTalk
- Integrated connectors on cover plate
- Retractable HDMI cable
- DynamicLoop
- DynamicShare

Finishes

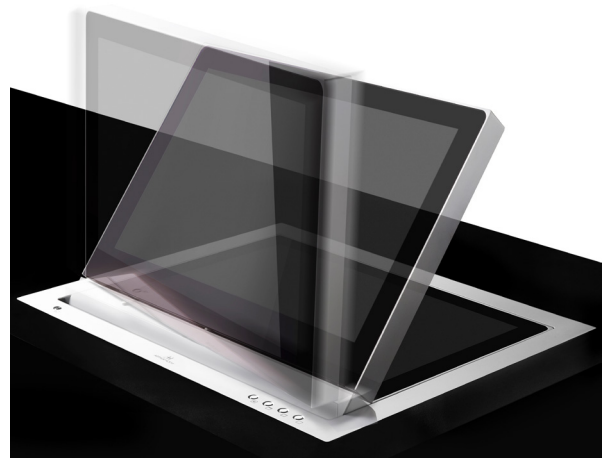
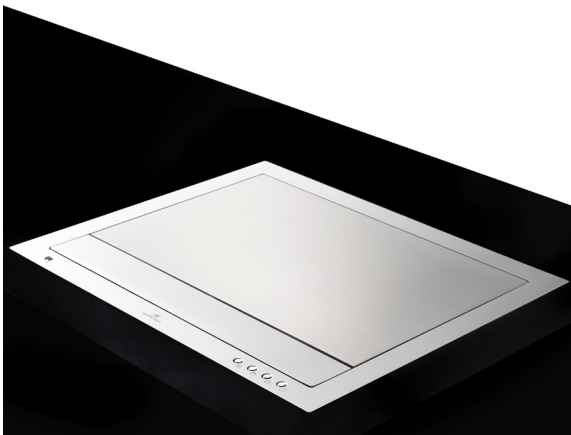
- Painted
- Black anodized
- Laser engraved logo
- Gold
- Bronze

Certifications

- CE
- IECEE
- CB

Warranty

- 2 years general warranty

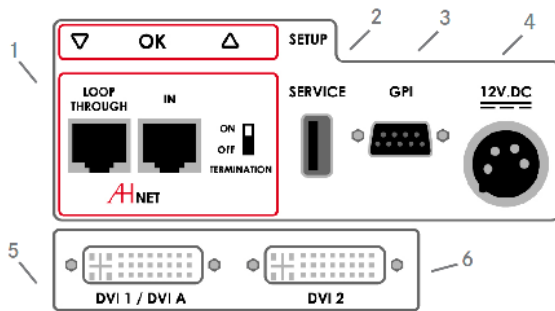


ARTHUR HOLM

Albiral Display Solutions SL · Fàtima, 25 · 08512 Sant Hipòlit de Voltregà · Barcelona, Spain · +34 938 502 376 · marketing@arthurholm.com · www.arthurholm.com

Arthur Holm is a registered brand of Albiral Display Solutions SL. Specifications subject to change without previous notice.

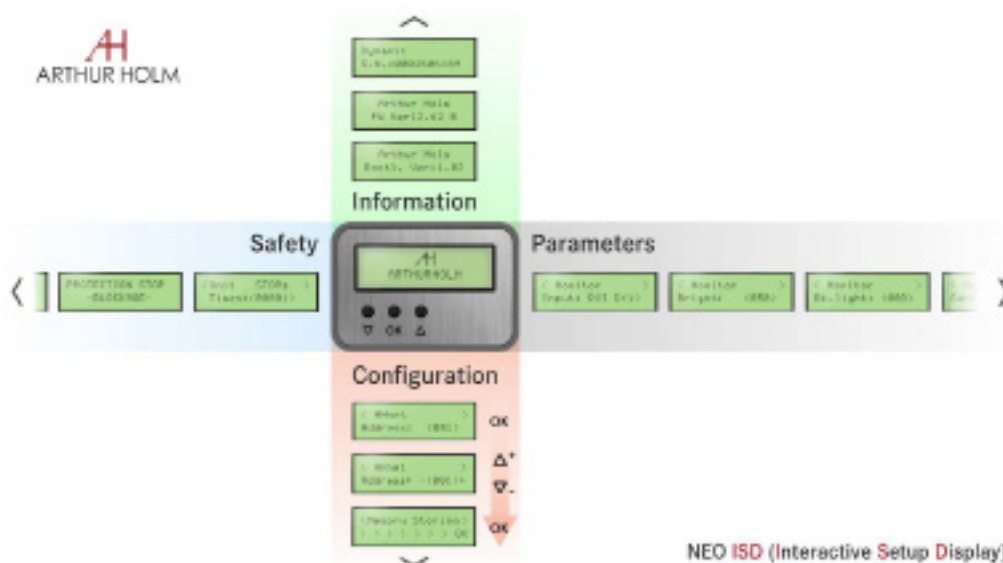
Make Your Meetings Count!



Connectivity

- 1- AHnet control interface
- 2- USB for Service
- 3- GPI control
- 4- Power input
- 5- DVI 1 / DVI A video input
- 6- DVI 2 video input

Interactive Setup Display



Consultants, architects and engineers specifications

Motorized foldable and rotatable 18.5" Full HD professional monitor. The monitor housing shall be made of milled anodized aluminum and the screen shall be protected with anti-reflective 2 side coating black edged 3 mm glass. The monitor shall have a brightness of 400 cd/m², a contrast ratio of 1500:1 and a backlight lifespan of 50,000 hours. The user shall be able to stop the movement at any point from 0° to 90° and the monitor shall provide a memory system to allow the user to recall the position. The monitor shall rotate 180° to be closed with the screen facing down. The monitor shall have a dual safety system that detects obstructions causing the unit to stop through a floating security sensor.

The monitor shall provide 2 DVI – HDCP Compliant inputs by a licensed HDCP monitor manufacturer. The monitor shall provide an addressable RS-422 / RS-485 Full Duplex and an easy-to-read interactive setup display (ISD) for the setup, diagnose and control, and shall be compatible with ERT-30 and ERT 60.

The monitor shall be able to run an auto-adjustment program to reset the factory security ratio between its factory movement speed and its protection parameters adapting the unit to the way it has been installed. The monitor shall provide a USB port for firmware upgrades. The monitor shall be compatible with the AHlink wireless Android and iOS App for the setup, diagnosis and control.

