

DynamicCL

Motorized camera lift for Neat Center
(Camera not included)



Highlights

- Motorized lift for 360° camera Neat Center
- Integrated camera power and cable for laptop connectivity
- RS-422/RS-485 Full Duplex for remote control
- Black cover plate

General

The DynamicCL is a motorized camera lift system for Neat Center that has been designed to hide table cameras when not in use. Table cameras often cover all the people at the table and are therefore located in a central position on the table.

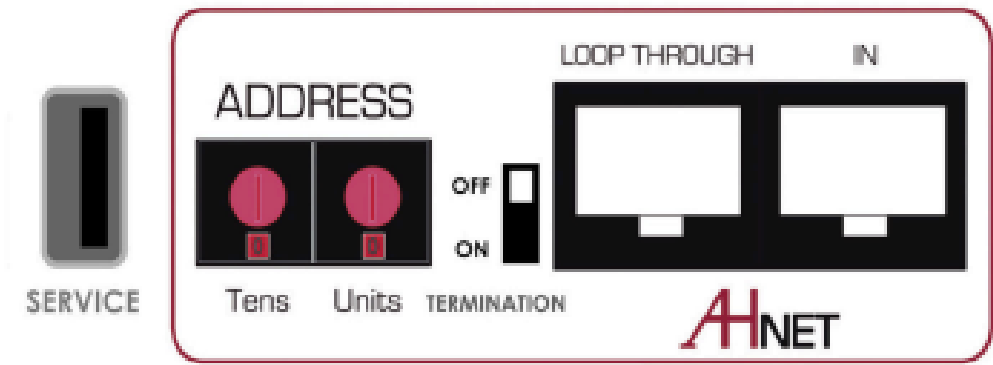
The up and down movement can be controlled remotely via RS-422 / RS-485 Full Duplex or locally on the device via a capacitive touch button.

The DynamicCL has the well-known Arthur Holm build quality with a smooth and almost silent movement of the camera. It has a brushed stainless steel cover plate with a capacitive touch button to control the movement of the device.

ARTHUR HOLM

Albiral Display Solutions SL · Fàtima, 25 · 08512 Sant Hipòlit de Voltregà · Barcelona, Spain · +34 938 502 376 · marketing@arthurholm.com · www.arthurholm.com
Arthur Holm is a registered brand of Albiral Display Solutions SL. Specifications subject to change without previous notice.

Make Your Meetings Count!



Technical Specifications

Materials
Steel, aluminum, nylon
Finishing
Black cover plate
Connectivity
USB Port for software update
XLR-4 input power

Motor Control	
Control Up/Down	Capacitive touch control sensor on cover plate
RJ45 CAT6	Addressable RS422 control by AHnet protocol
Electrical	
External power supply	100-240 Vac, 50/60Hz. 12VdC
Power consumption	30W
Dimensions	
Upper cover plate	Ø 216 x 3 mm [8.50" x 0.12"]
Housing below the table	514.50 x 174 mm x 152 mm [20.26" x 6.85" x 5.98]

Certifications

- CE

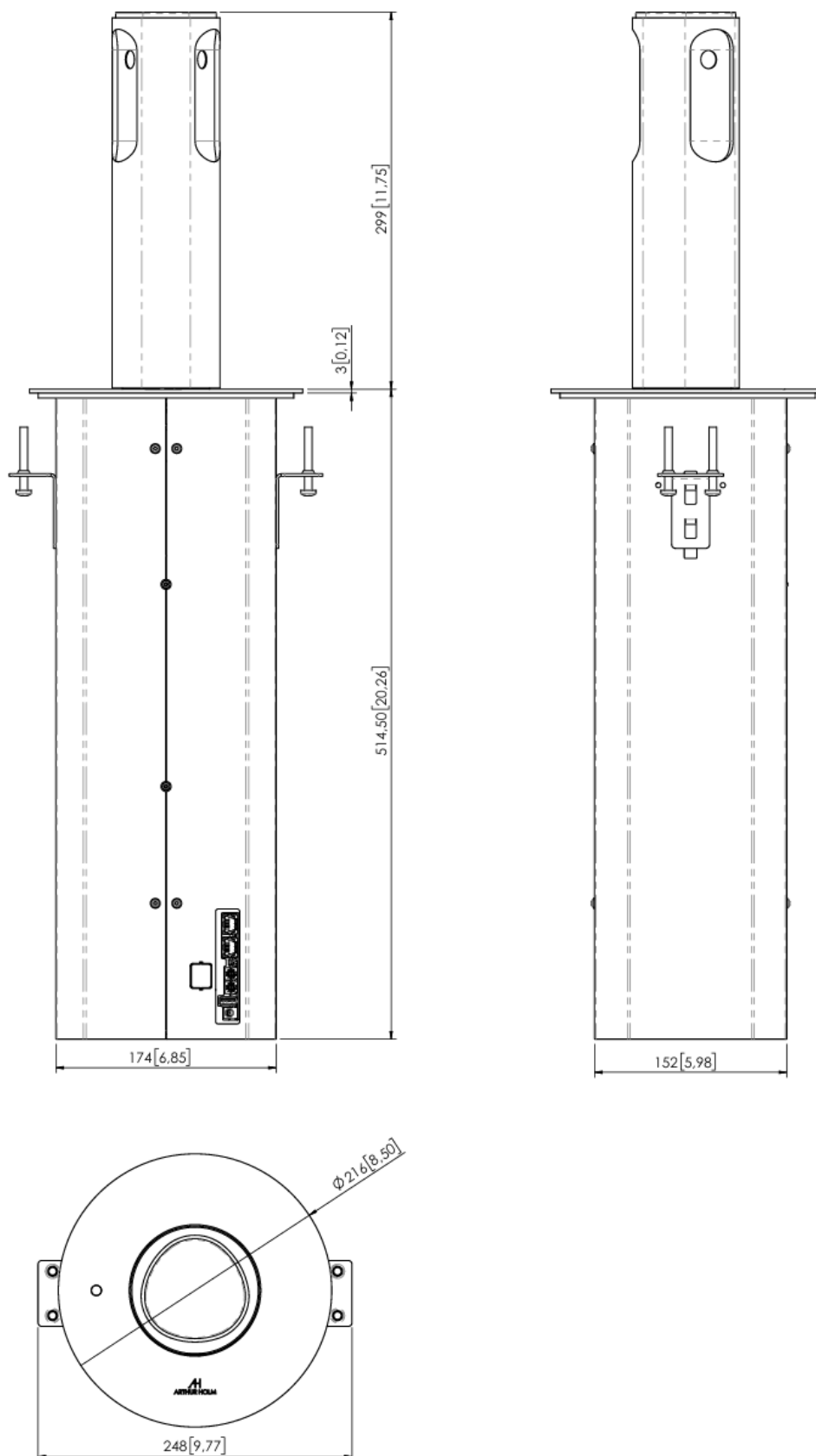
Compatible cameras

- Neat Center
- Logitech Sight
- For other 360° cameras, please contact us

Consultants, architects and engineers specifications

The motorized camera lift system shall retract the camera when not in use. The movements of the motorized camera lift shall be controlled remotely via RS-422/RS-485 Full Duplex or locally on the device via a capacitive touch button.

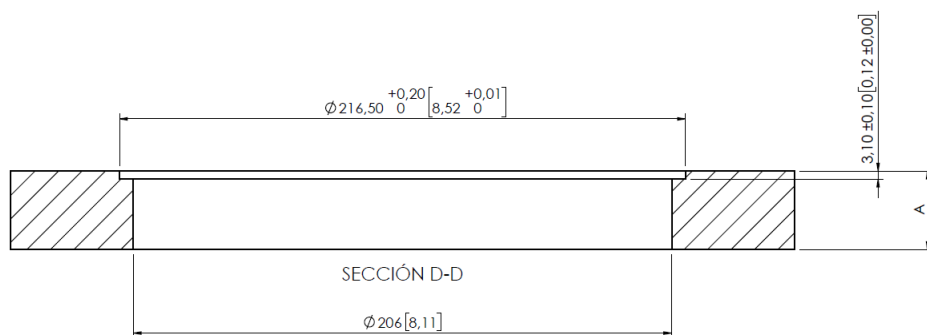
The lift shall provide a black steel cover plate with a capacitive touch button to control the up and down motion.



ARTHUR HOLM

Albiral Display Solutions SL · Fàtima, 25 · 08512 Sant Hipòlit de Voltregà · Barcelona, Spain · +34 938 502 376 · marketing@arthurholm.com · www.arthurholm.com
Arthur Holm is a registered brand of Albiral Display Solutions SL. Specifications subject to change without previous notice.

Make Your Meetings Count!



A= FROM 11 [0,43] TO 75 [2,95]

