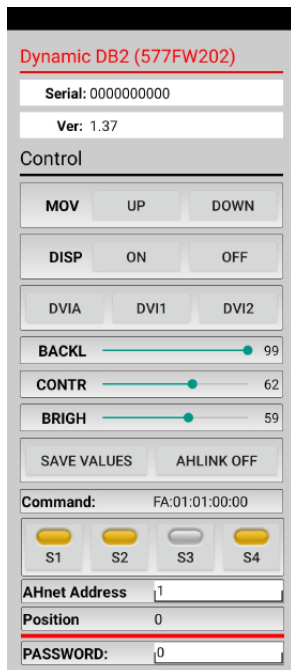
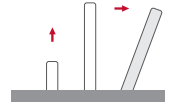


DB2Share

HDCP compliant retractable motorized monitor with DynamicShare



Highlights

- DB2 monitors with integrated DynamicShare technology
- Vertical motorized retractable HDCP compliant monitor with up to 20° inclination with input selection and input distribution
- Clean table integration with retractable cable solution
- Closed-loop HDMI distribution integrated inside the table
- Plug-and-play operation (no adapters, no compatibility issues, no software needed, no IT support)
- Wired presentation system with retractable HDMI cable (optional USB-C)
- One-touch content selection (View) and sharing (Share) for instant meeting start
- Maximum security (no wireless transmission)
- Input selection: up to 3 HDMI sources
- Output distribution: share to up to 20 displays simultaneously
- No cover plate required (monitor completely streamlined within the furniture).

AHlink : the App for setup, control and diagnose



General

Smart Communication, Minimal Impact

DB2Share is a motorized retractable DB2 monitor with DynamicShare System, designed for seamless integration and smarter collaboration.

It offers a wired presentation system that enables users to connect their laptop directly to a monitor via a retractable HDMI cable (optional USB-C) and start sharing content instantly by simply touching a button, ensuring maximum security with no wireless transmission.

This solution eliminates common meeting friction – no adapters, no compatibility issues, no software installation, and no IT support required – allowing meetings to start faster and run more smoothly with a reliable, plug-and-play experience.

The DB2 monitor features a motorized vertical movement with automatic 20° tilt for optimal ergonomics, visibility, and viewing angles, all while minimizing impact on furniture design.

Technical Specifications

Display

Size	Full HD 21.5" TFT Active Matrix, widescreen format. LED backlight
Resolution	1920 (h) x 1080 (v)
Brightness	500 cd/m2
Contrast ratio	1000:1
Pixel	0.24795 (h) x 0.24795 (v) mm
Viewing angle	89° / 89° (u/d) 89° / 89° (l/r)
Viewing area	476.064 (h) x 267.786 (v) mm
Response time	Tr 12ms, Tf 10ms
Temperature	Operating 0°C ~ +40°C Storage -20°C ~ +60°C

Materials

Monitor housing	Solid mechanized aluminum housing with anodized finish. Front black serigraphed glass.
-----------------	---

Connectivity

Input signal	1x HDMI retractable cable input 2x HDMI input below the monitor (HDMI loop IN/OUT) - HDCP compliant
RJ45 CAT6 (with loop)	Addressable RS-422/RS-485 monitor control by AHnet protocol
GPI (SubD9)	Up/Down control
USB	For service

Control

RJ45, RS-422/RS-485 Full Duplex (I/O), AHNet protocol
Addressing
Termination switch
IR Remote control (monitor adjustments): 1 Remote control is provided every 5 motorized devices
Interactive Setup Display

Movement's Control

User interface on monitor	(Up/Down) Capacitive touch sensor
Remote	RS-422/RS-485 Full Duplex, GPI

Electrical

External power supply	100-240 Vac, 50/60Hz, 12Vdc
Power consumption	70W

Accessories

ERT	Ethernet Interface Unit
-----	-------------------------

Mechanical

Screen	518 x 312.5 x 20mm [20.39" x 12.31" x 0.79"]
Top frame	518 x 20mm [20.39" x 0.79"]
Housing below the table	671 x 80 x 587mm [26.42" x 3.15" x 23.11"]
Weight	27 Kg / 59.5 Lbs

Packaging information

Box	831 x 185 x 745mm [32.72 x 7.28 x 29.33] aprox.
Weight	28 Kg / 61.73 Lbs aprox.

ARTHUR HOLM

Albiral Display Solutions SL · Fàtima, 25 · 08512 Sant Hipòlit de Voltregà · Barcelona, Spain · +34 938 502 376 · marketing@arthurholm.com · www.arthurholm.com
Arthur Holm is a registered brand of Albiral Display Solutions SL. Specifications subject to change without previous notice.

Make Your Meetings Count!

Options and accessories

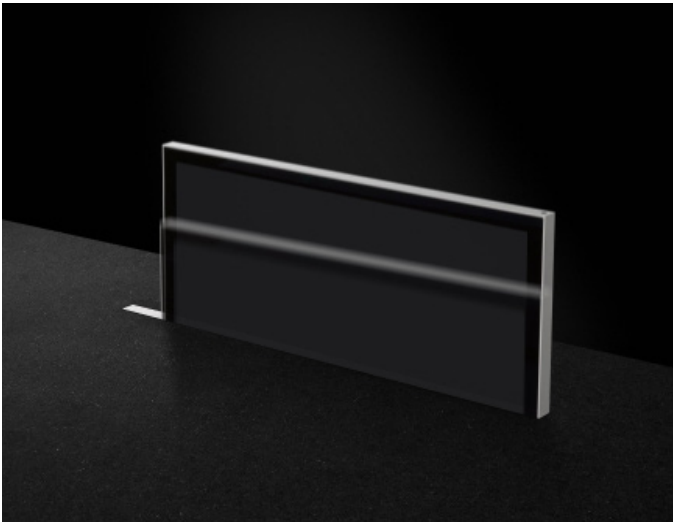
- Projected capacitive multi-touch screen
- Retractable USBC cable
- Automated hatch ready for veneering with capacitive sensor
- ERT-30 / ERT-60

Warranty

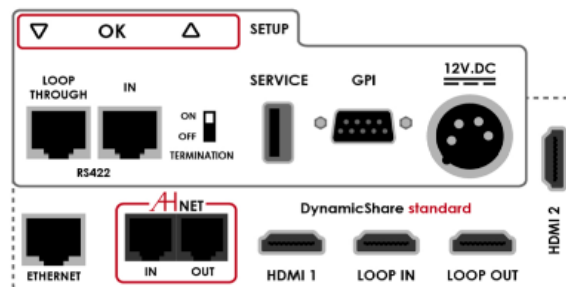
- 5 years limited warranty
- 2 years general warranty

Certifications

- CE
- IEC62368
- CB
- RoHS



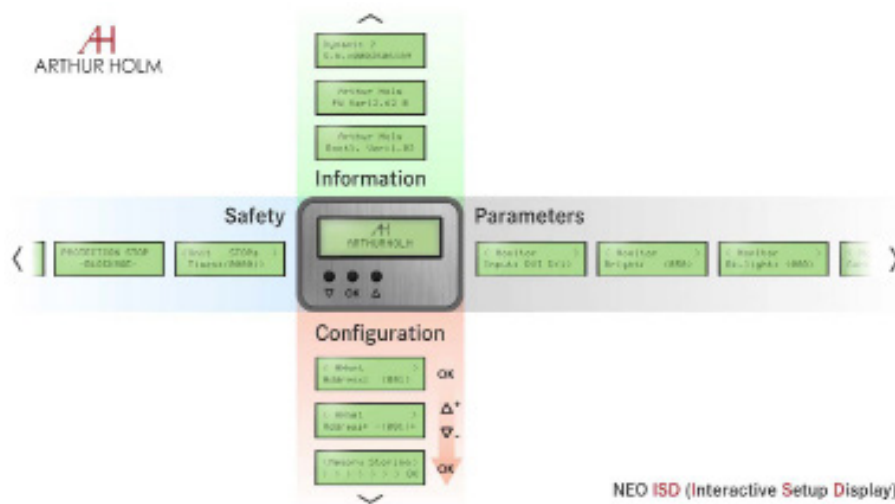
Connectivity Panel



ARTHUR HOLM

Albiral Display Solutions SL · Fàtima, 25 · 08512 Sant Hipòlit de Voltregà · Barcelona, Spain · +34 938 502 376 · marketing@arthurholm.com · www.arthurholm.com
Arthur Holm is a registered brand of Albiral Display Solutions SL. Specifications subject to change without previous notice.

Make Your Meetings Count!



Consultants, architects and engineers specifications

Vertically retractable motorized 21.5” Full HD professional monitor that requires a minimum opening on the table surface including 3 HDMI inputs by a licensed HDCP manufacturer, one of them being the retractable cable, an input selection and a straightforward sharing system.

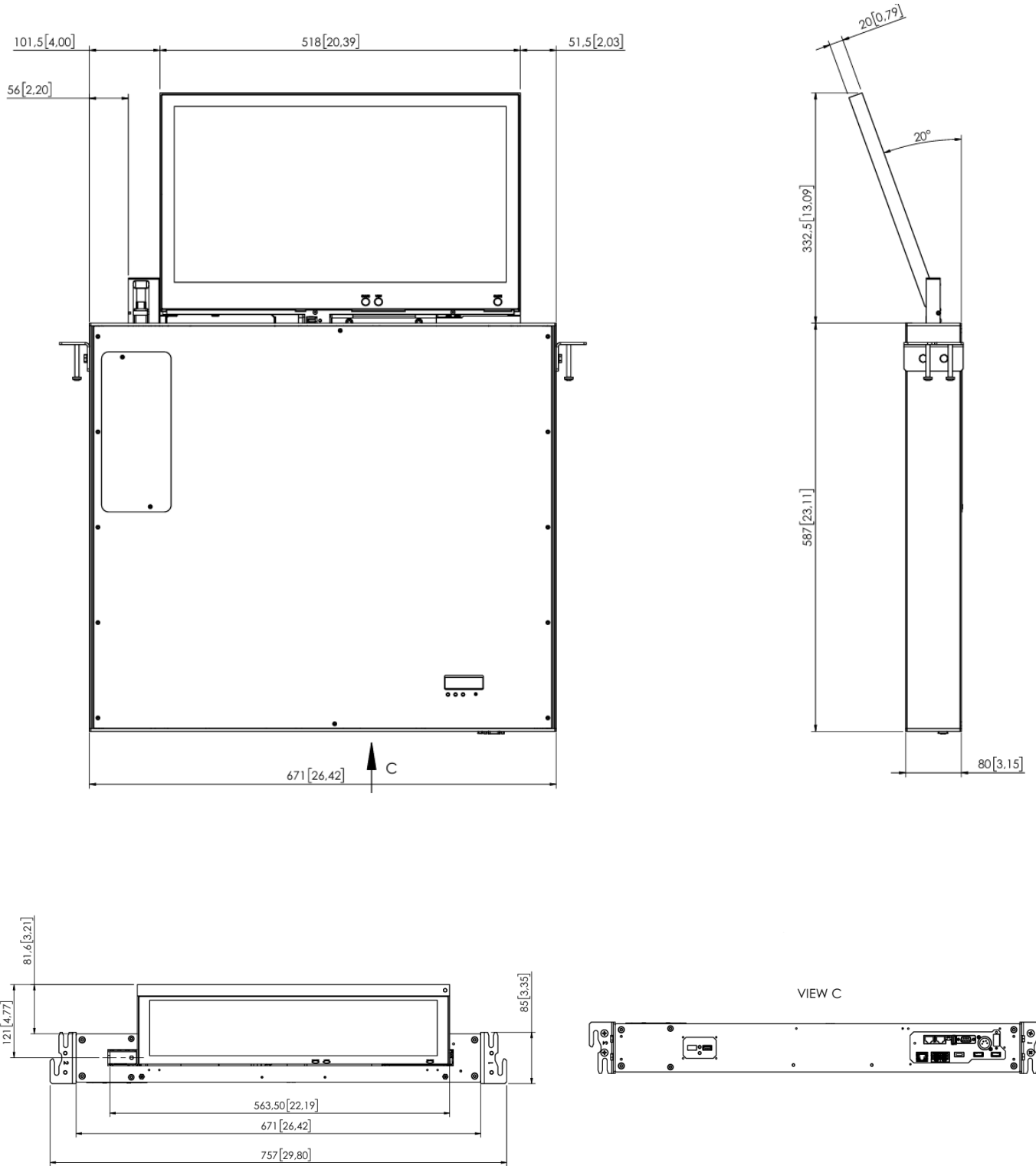
The monitor housing shall be made of milled anodized aluminum with a maximum thickness of 20 mm. and the screen shall be protected with an anti-reflecting 2 side coating 2mm glass. A retractable HDMI cable shall raise as an extension of the monitor and shall retract inside the table.

The top of the monitor housing shall be flush with the table when in recessed position. A capacitive button placed on top of the monitor housing shall activate the monitor’s up and down movements and the inclination angle to a maximum of 20°.

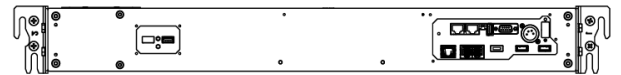
The system shall allow to daisy chain up to 20 monitors by using HDMI cables and shall allow the user full control to select and distribute HDMI inputs by touching capacitive buttons integrated on the glass of the screen, below the viewing area. The monitor shall have a brightness of 500 cd/m2, and a contrast ratio of 1000:1.

The system shall support HDMI daisy-chain distribution, allowing connection of up to 20 monitors at Full HD resolution without signal degradation.

General Dimensions



VIEW C



ARTHUR HOLM

Albiral Display Solutions SL · Fàtima, 25 · 08512 Sant Hipòlit de Voltregà · Barcelona, Spain · +34 938 502 376 · marketing@arthurholm.com · www.arthurholm.com
 Arthur Holm is a registered brand of Albiral Display Solutions SL. Specifications subject to change without previous notice.

Make Your Meetings Count!

DB2Share Connection Diagram

