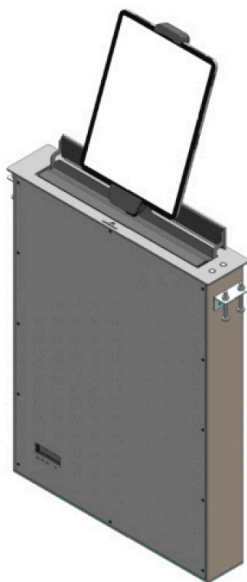




User Guide



AD2TL

Enhancing communication through technology

----- Trusted since 1985 -----

WELCOME

Thank you for purchasing an ALBIRAL product.

Please, read this installation and operating instructions carefully and keep them in a safe place for future reference.

We remain at your entire disposal if you have any suggestions.

Henrik Holm

General Manager

hholm@albiral.com

TABLE OF CONTENTS

REGULATIONS AND SECURITY 4

SAFETY INSTRUCTIONS 4

SYSTEM DESCRIPTION 6

INSTALLATION INSTRUCTIONS 7

POWER AND CONTROLS 8

CONTROLS 9

AHNET PROTOCOLS 10

AHLink 12

INFORMATION ON DISPOSAL 15

WARRANTY TERMS AND CONDITIONS 16

REGULATIONS AND SECURITY



ATTENTION: Do not disassemble or modify the device in any way. This symbol warns of the presence of dangerous un-insulated voltages inside some of the components, of sufficient magnitude to expose people to risk of electronic shock.



This symbol draws attention to important use and maintenance instructions in the manual that accompanies the unit.



This symbol indicates that the equipment conforms to the norms established by the European Community.



This symbol indicates D.C. current.

SAFETY INSTRUCTIONS

Plugs

- Do not dismantle any part of the monitor power connector.
- Disconnect the power plug from the AC outlet when the monitor is not going to be used for an indefinite period of time.

Power and extensions cords

- Use the appropriate power cord with the correct plug type.
- Do not overload wall outlets or power cords.
- Make sure the total ampere passed through a extension cord does not exceed the maximum allowed by the cable used.
- Do not place anything on the power cord.
- Do not locate this product where a person may walk or trip over the cord.

SAFETY INSTRUCTIONS



Wiring connected to hazardous voltage requires installation by qualified personnel or the use of ready-made flexible cables.



For your security, your equipment must be connected to an electrical outlet with grounding connection protection.

Since the plug is used to disconnect the device, the operating electrical outlet must be in an easily accessible place.



Moving parts:

Keep body parts out of the motion path.

Environment

- Install the equipment on an elevated, flat surface.
- Cannot be installed at a height greater than two meters.
- Install the equipment in a ventilated area.
- Avoid exposing the equipment to:
 - Rain or water
 - Excessive heat, cold or humidity
 - Area exposed to direct sunlight
 - Dirty areas
 - Equipment generating strong magnetic fields
- Avoid placing open containers of liquid, near the equipment.
- Keep a minimum distance of 30 mm in order to have good ventilation.
- Never place above the device any sources of flames such as lighted candles, etc.
- If you are using the device in extreme weather conditions and/or tropical climates, the equipment should be installed in a room which ensures a reasonable level of temperature and humidity.
- To prevent damage, the equipment must be firmly anchored to the surface, as shown in the installation instructions.

SYSTEM DESCRIPTION

General

DynamicTabLift is a motorised lift system for tablets. You can easily link your tablet when there's no need to break on a walking environment.

Highlights

- Motorised lift system for tablets
- Adaptable to tablets under request
- Revolving system for horizontal and vertical positions
- Serial control & Remote diagnosis

Box Contents

Before the installation of your retractable unit, please check the contents of the shipping box, it must contain the following items:

- Unit
- Power cord
- Remote control (1 per 5 units)
- Power supply 100-240Vac, 50-60Hz. Output 12V
- User guide

Power connection



CAUTION: Never use this device in horizontal position

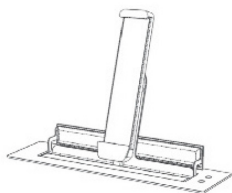
1. Plug the power cable from the power supply into an AC socket of 100-240 Vac, 50-60Hz.
2. Plug the 12V D.C. cable into the socket on the unit.

Important note: This device can only work with the power supply included in the shipping box. This power supply can not be replaced by any other rather than the original one.

INSTALLATION INSTRUCTIONS

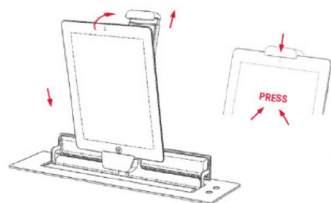
Instructions

Fitting the tablet:

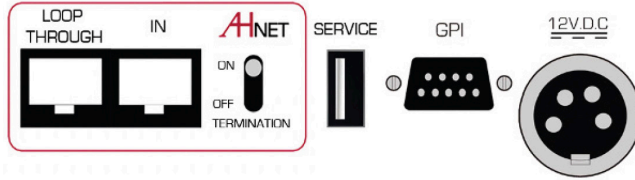


To place the tablet on the support, the support must be on vertical position (minimum inclination).

Once the support is in this position, pull the clip up and place the tablet against the support. To ensure a correct fit, press it while holding the clip up.



POWER AND CONTROL



12V D.C.  : Power supply input connector. XLR-4 connector.

- 1,2: Ground
- 3,4: 12Vdc

GPI: Unit external contact close control. SubD9 female.

1. GPI1 +
2. GPI1 -
3. GPI2 +
4. GPI2 -
5. GPI3 -
6. GPI3 +
7. N.C.
8. +12Vdc (600mA max.)
9. Ground:
 - Use GPI1 (1:12Vdc, 2: Ground) to open the unit
 - Use GPI3 (6:12Vdc, 5: Ground) to close the unit

Termination: Activate (ON) the termination. Only on the last unit of the RS422 bus.

AHnet: RJ45 CAT6 connector for addressable RS422 control. There is a loop through connector to use as signal RS422 output. Up to 30 units can be connected on the same RS422 bus.

Service: Used for firmware's upgrade.

CONTROLS

On the upper cover plate, there are two buttons to control the UP and DOWN movements function:

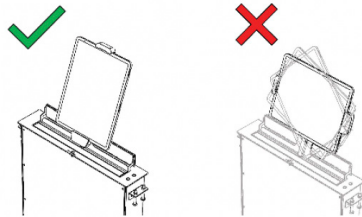


1. Raising the tablet:

To rise up the unit, press the rear button (1) on the right hand side of the cover plate.

2. Retracting the tablet:

To retract the unit, press the front button (2) on the right hand side of the cover plate.



AHNET PROTOCOL

Communications protocol

COMMUNICATION	RS422
CONNECTION	RJ45
WIRING	CAT-6

Speed and configuration

BAUD RATE	38400
DATA BITS	8
PARITY	NONE
STOP BITS	1

Wiring Diagram

- 1. Data TX +
- 2. Data TX –
- 3. Data RX +
- 4. NC
- 5. NC
- 6 .Data RX
- 7. NC
- 8. NC



RJ-45

Connection

- PINS 1 & 2 The units respond
- PINS 3 & 6 The units receive instructions

Protocol to control the unit by addressable RS422 bus.
You can connect up to 30 devices on the same RS422 bus.
You can use an AH Interface Ethernet, to control the RS422 bus.
The units should have a set address and the address must start by 1.
Maximum cable length between ends, 500 m/1 640 ft.

AHnet protocol

Using 5 bytes communication:

BYTE 0	START BYTE
BYTE 1	ADDRESS BYTE
BYTE 2	COMMAND BYTE
BYTE 3	VALUE 1
BYTE 4	VALUE 2

AHNET PROTOCOL

Commands

COMMAND	DESCRIPTION	RESPONSE
FA XX 01 01 00	GO UP	FB XX 01 01 00
FA XX 01 00 00	GO DOWN	FB XX 01 00 00
FA XX 04 00 00	BUTTON LOCK	FB XX 04 01 00
FA XX 04 01 00	BUTTON UNLOCK	FB XX 04 00 00
FA XX 14 00 00	INQUIRY CONTROL BYTE	FB XX 14 CB1 CB2

- XX Number of the unit address. Up to 30 units for each RS422 BUS
CB1 Response in 8 bits of the unit status
CB2 Not implemented

CB1

BITE	7	6	5	4	3	2	1	0
CLOSED			1	1	0	1		
OPENED			0	1	0	1		
PROTECT STOP								1
LIFT OK								0

CB2

BITE	7	6	5	4	3	2	1	0
BUTTON LOCK								1
BUTTON								0

To send an order to all the units, you must use the address:

- 249 Dec. (Byte1)
- F9 Hex. (Byte1)

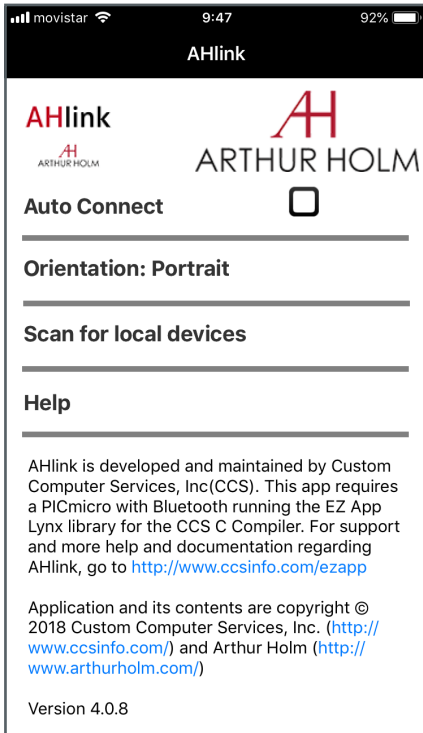
In this case, the units do not respond.

AHLINK

AHLink is used to control and set-up the unit.

By default, the AHLink wireless signal is deactivated. To activate it, please press and hold simultaneously the Open and Close buttons on the cover plate for 5 seconds.

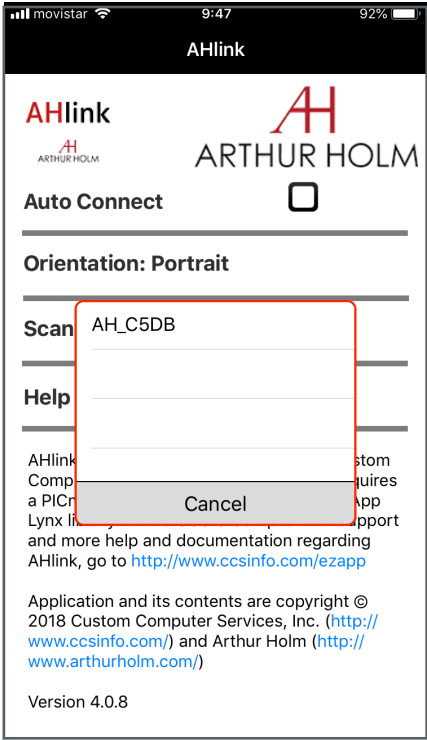
You can also activate the AHLink wireless signal by using the Interactive Setup Display (ISD) located below the monitor. Press successively the Down arrow until the AHLink appears on the LCD screen. Then, press the OK button and you will hear a 5 Beep sound. This means that the AHLink is active.



The wireless AHLink signal automatically deactivates when there is no device connected during more than 2 minutes. When the AHLink deactivates, you will hear a long Beep sound.

To control and set up your AH product with AHLink, please download it from the App Store (IOS system) or from Google Play (Android system) and execute it in your handled device.

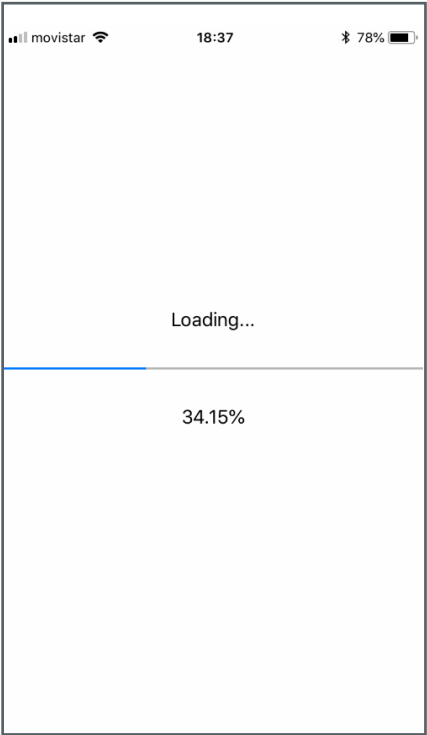
It is recommended on to select Auto Connect and select Portrait on Orientation. To connect it, select Scan for local devices.



After selecting the AH device, the first page will upload on your screen. This page is used for the basic installation setup.

If your AH device does not appear on the screen, the AHLINK signal might no longer be active.

The AHLINK name always begins with the characters “AH” followed by the four last MAC AHLINK address. You must select the AH device.



AHLINK

< AHLINK

Arthur Holm

TabLift (577FW220)

Serial: 0123056789

Ver: 1.18

Control

MOV

UP

DOWN

AHLink OFF

Command:

00:00:00:00:00

S1

S2

S3

S4

AHnet Address

1

Position

0

PASSWORD:

0

- SERIAL
Serial number of the unit
- VER
Firmware version
- MOV
Controls the Up and Down monitor movements
- AHLINK OFF
Turns off the AHLINK signal
- COMMAND: Information of the last AHnet command received from RS422 port
- SENSORS: Indicates sensor status.
S1 Unit up position
S2 Tablet rotation
- AHNET ADDRESS
AHNET address settings
- POSITION
Tablet position
- PASSWORD
Access to the factory's settings

INFORMATION ON DISPOSAL FOR USERS OF WASTE ELECTRICAL & ELECTRONIC EQUIPMENT



This symbol on the products and/or accompanying documents means that used electrical and electronic products should not be mixed with general household waste.

For proper treatment, recovery and recycling, please take these products to the designated collection points, where they will be accepted on a free of charge basis. Alternatively in some countries, you may be able to return your products to your local retailer upon the purchase of an equivalent new product.

Disposing of this product correctly will help save valuable resources and prevent any potential negative effects on human health and the environment, which could otherwise arise from inappropriate waste handling. Please contact your local authority for further details of your nearest designated collection point.

Penalties may be applicable for incorrect disposal of this waste, in accordance with national legislation.

For business users in the European Union

If you wish to discard electrical and electronic equipment, please contact your dealer or supplier for further information.

Information on disposal in countries outside the European Union

This symbol is only valid in the European Union. If you wish to discard this product, please contact your local authorities or dealer and ask for the correct method of disposal.

WARRANTY TERMS AND CONDITIONS

Albiral Display Solutions warrants this product against manufacturing defects and workmanship for a period of two (2) years from the date of purchase, subject to the conditions below.

1. Electrical, electronic boards, accessories and power supply are warranted against manufacturing defects and workmanship for a period of two (2) years from the date of purchase
2. Labour costs: Albiral Display Solutions covers the labour costs to replace any defective parts during the validity of this warranty.
3. Transport costs:
 - 3.1. In the case that a manufacturing defect occurs within 90 days after the purchase date, both freight and insurance costs will be paid by Albiral Display Solutions.

Although Albiral Display Solutions S.L. pays for freight and insurance costs, Albiral Displays Solutions will not be responsible for any damages caused by the transportation of the goods if the customer does not inform in writing when receiving the goods.

- 3.2. After 90 days of the purchase date, the beneficiary of the warranty will pay both freight and insurance costs.

Albiral Display Solutions S.L. will not be responsible for any damages caused by transportation, when this one is paid by the customer.

4. This warranty does not cover the labour costs of handling, diagnose, removal, replacement, reinstall and/or program any product.
5. This warranty does not apply if the fault has been caused by misuse, improper handling, electrical or mechanical abuse, abnormal operation conditions, non-authorized modifications, and inadequate transportion or as a result of atmospheric phenomenons.

WARRANTY TERMS AND CONDITIONS

6. The warranty is not valid if people other than authorised Service Centre have handled the product and if the product has been manipulated or warranty seals are removed or manipulated.
7. The beneficiary of the warranty will have to return the product with the original packaging to warranty there are no damages during transportation.
8. The warranty is not valid if the beneficiary of the warranty does not include a RMA form and a copy of the purchasing invoice.

Please note that laws vary from country to country, and the same provisions of this warranty may not apply to you.

If you have any doubts concerning the terms of this warranty, please contact:

business@albiral.com

+34 938 502 376

Copyright ©

Nov. 2020. All rights reserved

Albiral Display Solutions SL.

Registered trademarks: Albiral, Arthur Holm



Albiral Display Solutions

Fàtima 25, Sant Hipòlit de Voltregà
08512 Barcelona – Spain
tel: +34 93 850 23 76 / 23 83
fax: +34 93 850 25 50 / 23 72
web: www.albiral.com
e-mail: marketing@arthurholm.com

Patents

MU17180ES00	P27178ITEP
MU17301ES00	P27178RUPC
MU17322ES00	P27178USPC
MU17413ES00	P27284DEEP
MU17445ES00	P27284EPPC
MU17854ES00	P27284ESEP
MU17868DEPC	P27284GBEP
MU17868RUPC	P27284RUPC
P24821DEEP	P27284USPC
P24821ESEP	P27715ESEP
P24821GBEP	P28089DEEP
P24821USPC	P28089ESEP
P27178DEEP	P28089ITEP
P27178EPDV01	P28089USPC
P27178EPPC	P28090EP00
P27178ESEP	P31160ESES
	P31160PCES